

Datasheet for ABIN6971552

anti-CTBP2 antibody (Isoform 1, Isoform 2)**2** Images[Go to Product page](#)

Overview

Quantity:	100 µL
Target:	CTBP2
Binding Specificity:	Isoform 1, Isoform 2
Reactivity:	Human, Mouse
Host:	Rabbit
Clonality:	Polyclonal
Conjugate:	This CTBP2 antibody is un-conjugated
Application:	Western Blotting (WB), ChIP DNA-Sequencing (ChIP-seq), Chromatin Immunoprecipitation (ChIP)

Product Details

Immunogen:	This CTBP2 antibody was raised against a peptide in the C-terminal region of human CTBP2. This antibody recognizes both isoform 1 and 2.
Isotype:	IgG
Characteristics:	The CTBP2 (C-terminal binding protein 2) gene encodes a protein that is a corepressor targeting diverse transcription regulators. It functions in brown adipose tissue (BAT) differentiation. Isoform 2 probably acts as a scaffold for specialized synapses. Isoform 2 is also phosphorylated upon DNA damage, probably by ATM or ATR at Thr179, Ser181 and Ser185. Phosphorylation by HIPK2 on Ser428 induces proteasomal degradation. CTBP2 antibody (pAb) was raised in a Rabbit host. It has been validated for use in Chromatin Immunoprecipitation, ChIP-Seq and Western blot, it has been shown to react with Human and Mouse samples.

Product Details

Purification: Affinity Purified

Target Details

Target: CTBP2

Alternative Name: CTBP2 ([CTBP2 Products](#))

Molecular Weight: 50 kDa

NCBI Accession: [NP_001077383](#)

Application Details

Application Notes: Optimal working dilution should be determined by the investigator.

Restrictions: For Research Use only

Handling

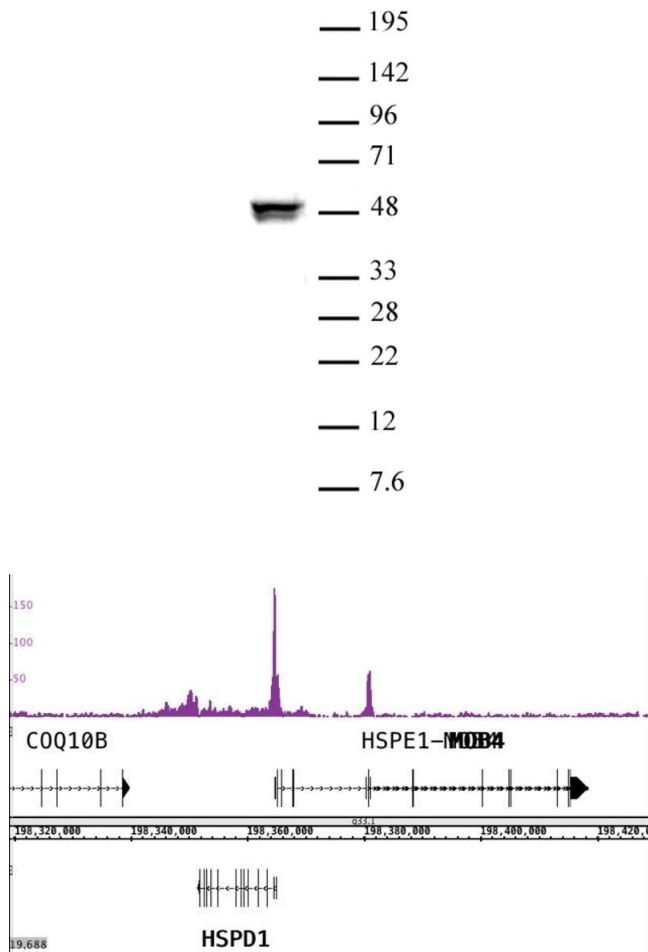
Buffer: Purified IgG in PBS with 30 % glycerol and 0.035 % sodium azide.

Preservative: Sodium azide

Precaution of Use: This product contains Sodium azide: a POISONOUS AND HAZARDOUS SUBSTANCE which should be handled by trained staff only.

Storage: -20 °C

Storage Comment: Avoid repeated freeze/thaw cycles by aliquoting items into single-use fractions for storage at -20°C for up to 2 years. Keep all reagents on ice when not in storage.



Western Blotting

Image 1. CTBP2 antibody (pAb) tested by Western blot. Nuclear extract of HeLa cells (10 µg) probed with CTBP2 antibody (1:1000).

ChIP DNA-Sequencing

Image 2. CTBP2 antibody (pAb) tested by ChIP-Seq. ChIP was performed using the ChIP-IT High Sensitivity Kit with 30 µg of chromatin from mouse liver and 10 µL of antibody. ChIP DNA was sequenced on the Illumina HiSeq and 15 million sequence tags were mapped to identify CTBP2 binding sites. The image shows binding across a regions of chromosome 11. You can view the complete data set in the UCSC Genome Browser