

Datasheet for ABIN6971565  
**anti-CXXC4 antibody (N-Term)**[Go to Product page](#)

## 1 Image

## Overview

Quantity:	100 µL
Target:	CXXC4
Binding Specificity:	N-Term
Reactivity:	Human, Mouse
Host:	Rabbit
Clonality:	Polyclonal
Conjugate:	This CXXC4 antibody is un-conjugated
Application:	Western Blotting (WB)

## Product Details

Immunogen:	This antibody was raised against a peptide within the N-terminal region of mouse Cxxc4.
Isotype:	IgG
Characteristics:	Cxxc4 (CXXC Finger Protein 4) acts as a negative regulator of the Wnt signaling pathway via its interaction with DVL1 and has been implicated in malignant renal cell carcinoma and colonic villous adenoma. Recently, Cxxc4 has been shown to be involved in the regulation of DNA demethylation. It binds to unmethylated CpGs in DNA and is involved in TET2 downregulation. Cxxc4 antibody (pAb) was raised in a Rabbit host. It has been validated for use in Western blot, it has been shown to react with Human and Mouse samples.
Purification:	Affinity Purified

## Target Details

Target:	CXXC4
Alternative Name:	Cxxc4 ( <a href="#">CXXC4 Products</a> )
Molecular Weight:	42 kDa
NCBI Accession:	<a href="#">NP_001004367</a>

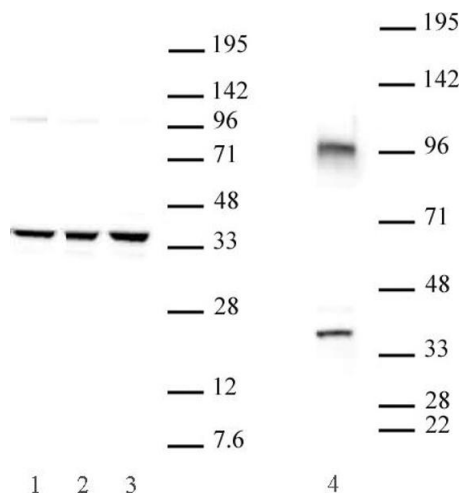
## Application Details

Application Notes:	Optimal working dilution should be determined by the investigator.
Restrictions:	For Research Use only

## Handling

Buffer:	Purified IgG in PBS with 30 % glycerol and 0.035 % sodium azide.
Preservative:	Sodium azide
Precaution of Use:	This product contains Sodium azide: a POISONOUS AND HAZARDOUS SUBSTANCE which should be handled by trained staff only.
Storage:	-20 °C
Storage Comment:	Avoid repeated freeze/thaw cycles by aliquoting items into single-use fractions for storage at -20°C for up to 2 years. Keep all reagents on ice when not in storage.

## Images



### Western Blotting

**Image 1.** Cxxc4 antibody (pAb) tested by Western blot. Detection of Cxxc4 antibody by Western blot analysis. Lane 1: Mouse ES cytoplasmic extract. Lane 2: F9 cytoplasmic extract. Lane 3: P19 cytoplasmic extract. Lane 4: HEK293 whole cell extract. 30 µg of lysate per lane probed with Cxxc4 antibody at a dilution of 1:1,000.