



[Go to Product page](#)

Datasheet for ABIN6971602  
**anti-DOT1L antibody (C-Term)**

1 Image

Overview

Quantity:	100 µL
Target:	DOT1L
Binding Specificity:	C-Term
Reactivity:	Human
Host:	Rabbit
Clonality:	Polyclonal
Conjugate:	This DOT1L antibody is un-conjugated
Application:	Western Blotting (WB)

Product Details

Immunogen:	This DOT1L antibody was raised against a peptide derived from the C-terminal region of human DOT1L.
Isotype:	IgG
Characteristics:	DOT1L (Disruptor of Telomeric silencing 1-like, also known as KMT4) is the mammalian homologue of the yeast Dot1 protein and the Drosophila Grappa protein. DOT1L is the enzyme responsible for lysine 79 methylation of histone H3. DOT1L can promote an oncogenic pattern of gene expression through binding with several MLL fusion partners found in acute leukemia, thus leading to aberrant methylation of lysine 79 at MLL target genes. In contrast to most other histone lysine methyltransferases, DOT1L does not contain a SET domain. Biochemical studies suggest that recombinant DOT1L is active on recombinant nucleosomes. DOT1L antibody (pAb) was raised in a Rabbit host. It has been validated for use in Western blot, it has been shown to react with Human samples.

## Product Details

---

Purification: Affinity Purified

## Target Details

---

Target: DOT1L

Alternative Name: DOT1L ([DOT1L Products](#))

Molecular Weight: 200 kDa

NCBI Accession: [NP\\_115871](#)

## Application Details

---

Application Notes: Optimal working dilution should be determined by the investigator.

Restrictions: For Research Use only

## Handling

---

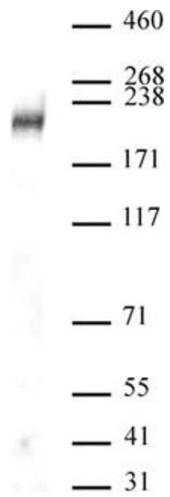
Buffer: Purified IgG in 70 mM Tris ( pH 8), 105 mM NaCl, 31 mM glycine, 0.07 mM EDTA, 30 % glycerol and 0.035 % sodium azide.

Preservative: Sodium azide

Precaution of Use: This product contains Sodium azide: a POISONOUS AND HAZARDOUS SUBSTANCE which should be handled by trained staff only.

Storage: -20 °C

Storage Comment: Avoid repeated freeze/thaw cycles by aliquoting items into single-use fractions for storage at -20°C for up to 2 years. Keep all reagents on ice when not in storage.



### Western Blotting

**Image 1.** DOT1L antibody (pAb) tested by Western blot. Nuclear extract of HEK293 cells (40 µg per lane) probed with DOT1L antibody (pAb) at a dilution of 1:500.