

Datasheet for ABIN6971625
anti-ELK1 antibody (C-Term)[Go to Product page](#)

2 Images

Overview

Quantity:	100 µL
Target:	ELK1
Binding Specificity:	C-Term
Reactivity:	Human
Host:	Rabbit
Clonality:	Polyclonal
Conjugate:	This ELK1 antibody is un-conjugated
Application:	Western Blotting (WB), Immunoprecipitation (IP)

Product Details

Immunogen:	This Elk-1 antibody was raised against a peptide within the C-terminal region of human Elk-1.
Isotype:	IgG
Characteristics:	Elk-1 (ETS-like gene 1) is a member of the ETS family of transcription factors and stimulates transcription. It binds to purine-rich DNA sequences, and can form a ternary complex with the serum response factor and the ETS and SRF motifs of the fos serum response element. Elk-1 antibody (pAb) was raised in a Rabbit host. It has been validated for use in Immunoprecipitation and Western blot, it has been shown to react with Human samples.
Purification:	Affinity Purified

Target Details

Target:	ELK1
---------	------

Target Details

Alternative Name:	Elk-1 (ELK1 Products)
Molecular Weight:	68 kDa
NCBI Accession:	NP_005220
Pathways:	MAPK Signaling , Neurotrophin Signaling Pathway , Activation of Innate immune Response , Toll-Like Receptors Cascades , Signaling of Hepatocyte Growth Factor Receptor , BCR Signaling

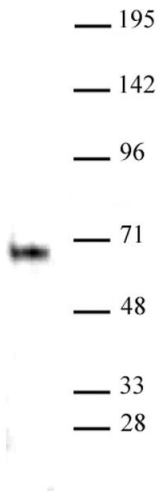
Application Details

Application Notes:	Optimal working dilution should be determined by the investigator.
Restrictions:	For Research Use only

Handling

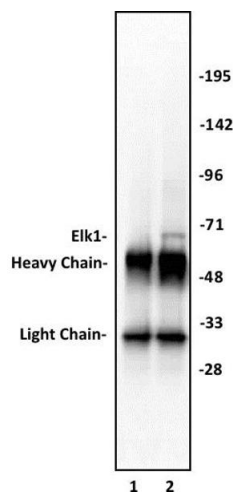
Buffer:	Purified IgG in PBS with 30 % glycerol and 0.035 % sodium azide.
Preservative:	Sodium azide
Precaution of Use:	This product contains Sodium azide: a POISONOUS AND HAZARDOUS SUBSTANCE which should be handled by trained staff only.
Storage:	-20 °C
Storage Comment:	Avoid repeated freeze/thaw cycles by aliquoting items into single-use fractions for storage at -20°C for up to 2 years. Keep all reagents on ice when not in storage.

Images



Western Blotting

Image 1. Elk-1 antibody (pAb) tested by Western blot. Whole cell extract of HeLa cells (40 µg) probed with Elk-1 antibody (1:500).



Immunoprecipitation

Image 2. Elk-1 antibody (pAb) tested by Immunoprecipitation. 10 μ L of Elk-1 antibody was used to immunoprecipitate Elk-1 from 400 μ g of HeLa whole cell extract (lane 2). 10 μ L of rabbit IgG was used as a negative control (lane 1). The immunoprecipitated protein was detected by Western blotting using the Elk-1 antibody at a dilution of 1:500.