



[Go to Product page](#)

Datasheet for ABIN6971627

anti-ELP3/KAT9 antibody (N-Term)

1 Image

Overview

Quantity:	100 µL
Target:	ELP3/KAT9 (ELP3)
Binding Specificity:	N-Term
Reactivity:	Human
Host:	Rabbit
Clonality:	Polyclonal
Conjugate:	This ELP3/KAT9 antibody is un-conjugated
Application:	Western Blotting (WB)

Product Details

Immunogen:	This ELP3 antibody was raised against a peptide within the N-terminal half of human ELP3.
Isotype:	IgG
Characteristics:	<p>ELP3 (Elongator Protein 3, also called KAT9) was originally identified as a component of the RNA polymerase II elongator complex, involved in transcriptional elongation by RNA Pol II. Elongator, through ELP3 may play a role in chromatin remodeling and is involved in acetylation of histones H3 and possibly H4. ELP3 may also play a role as a DNA demethylase in vertebrates, as it is important for paternal DNA demethylation. ELP3 antibody (pAb) was raised in a Rabbit host. It has been validated for use in Western blot, it has been shown to react with Human samples.</p>
Purification:	Affinity Purified

Target Details

Target:	ELP3/KAT9 (ELP3)
Alternative Name:	ELP3 (ELP3 Products)
Molecular Weight:	62 kDa
NCBI Accession:	NP_060561

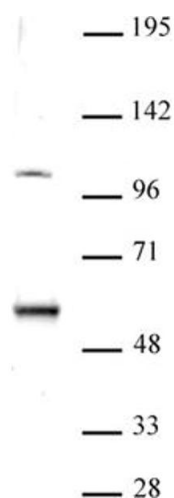
Application Details

Application Notes:	Optimal working dilution should be determined by the investigator.
Restrictions:	For Research Use only

Handling

Buffer:	Purified IgG in 70 mM Tris (pH 8), 105 mM NaCl, 31 mM glycine, 0.07 mM EDTA, 30 % glycerol and 0.035 % sodium azide.
Preservative:	Sodium azide
Precaution of Use:	This product contains Sodium azide: a POISONOUS AND HAZARDOUS SUBSTANCE which should be handled by trained staff only.
Storage:	-20 °C
Storage Comment:	Avoid repeated freeze/thaw cycles by aliquoting items into single-use fractions for storage at -20°C for up to 2 years. Keep all reagents on ice when not in storage.

Images



Western Blotting

Image 1. ELP3 antibody (pAb) tested by Western blot. Nuclear extract of K-562 cells (20 µg) probed with ELP3 antibody (pAb) at a dilution of 1:500.