



Datasheet for ABIN6971629
anti-SLC7A1 antibody (C-Term)



[Go to Product page](#)

1 Image

Overview

Quantity:	100 µL
Target:	SLC7A1
Binding Specificity:	C-Term
Reactivity:	Human
Host:	Rabbit
Clonality:	Polyclonal
Conjugate:	This SLC7A1 antibody is un-conjugated
Application:	Western Blotting (WB)

Product Details

Immunogen:	This ERR-alpha antibody was raised against a peptide within the C-terminal region of human ERR alpha.
Isotype:	IgG
Characteristics:	ERR-a (Estrogen-related receptor alpha, NR3B1) is an orphan nuclear receptor similar to the Estrogen Receptor. It is a sequence-specific DNA binding transcriptional activator that is constitutively active in the absence of ligand binding. No true physiological ligands have been found, but estrogen-like compounds from plants have been shown to activate ERR-a. ERR-a and ER-a have been found to regulate an overlapping set of genes, and ERR-a appears to modulate the activity of ER-a in some tissue types. ERR-a regulates genes involved in mitochondrial biogenesis, gluconeogenesis, oxidative phosphorylation, and fatty acid metabolism. ERR-a knockout mice display impaired fat metabolism and absorption. ERR-a antibody (pAb) was raised in a Rabbit host. It has been validated for use in Western blot, it has been shown to react

Product Details

with Human samples.

Purification: Affinity Purified

Target Details

Target: SLC7A1

Alternative Name: ERR- α ([SLC7A1 Products](#))

Molecular Weight: 50 kDa

NCBI Accession: [NP_004442](#)

Pathways: [Dicarboxylic Acid Transport](#)

Application Details

Application Notes: Optimal working dilution should be determined by the investigator.

Restrictions: For Research Use only

Handling

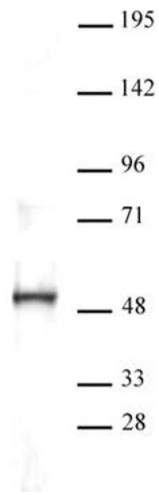
Buffer: Purified IgG in 70 mM Tris (pH 8), 105 mM NaCl, 31 mM glycine, 0.07 mM EDTA, 30 % glycerol and 0.035 % sodium azide.

Preservative: Sodium azide

Precaution of Use: This product contains Sodium azide: a POISONOUS AND HAZARDOUS SUBSTANCE which should be handled by trained staff only.

Storage: -20 °C

Storage Comment: Avoid repeated freeze/thaw cycles by aliquoting items into single-use fractions for storage at -20°C for up to 2 years. Keep all reagents on ice when not in storage.



Western Blotting

Image 1. Western blot of ERR-a antibody. Nuclear extract of MDA-MB-231 cells (20 μ g per lane) probed with ERR alpha antibody at a dilution of 1:500.