

Datasheet for ABIN6971634
anti-RUNX1T1 antibody (Internal Region)[Go to Product page](#)

2 Images

Overview

Quantity:	100 µL
Target:	RUNX1T1
Binding Specificity:	Internal Region
Reactivity:	Human
Host:	Rabbit
Clonality:	Polyclonal
Conjugate:	This RUNX1T1 antibody is un-conjugated
Application:	Western Blotting (WB), Immunoprecipitation (IP)

Product Details

Immunogen:	This ETO / RUNX1T1 antibody was raised against a peptide within the internal region of human ETO / RUNX1T1.
Isotype:	IgG
Characteristics:	<p>ETO / RUNX1T1 (AML1T1, CBFA2T1, MTG8, ZMYND2) belongs to a family of evolutionarily conserved nuclear factors that act as a transcriptional corepressor. ETO / RUNX1T1 does not interact directly with DNA but is recruited by transcription factors such as PLZF, BCL6, TAL1/SCL, Gfi1 and Heb recruit nuclear co-repressors such as NCoR, SIN3, and SMRT / NCoR2, which in turn interact with histone deacetylase (HDAC) to mediate transcriptional repression.</p> <p>ETO / RUNX1T1 contains four evolutionarily conserved functional domains called neryv homology regions (NHRs) involved in protein-protein interaction. ETO / RUNX1T1 is frequently found as a fusion partner of AML1 in acute myeloid leukemia with the t(8,21) translocation which gives rise to the AML-ETO fusion protein. ETO / RUNX1T1 antibody (pAb) was raised in a</p>

Product Details

Rabbit host. It has been validated for use in Immunoprecipitation and Western blot, it has been shown to react with Human samples.

Purification: Affinity Purified

Target Details

Target: RUNX1T1

Alternative Name: ETO / RUNX1T1 ([RUNX1T1 Products](#))

Molecular Weight: 68 kDa

NCBI Accession: [NP_783553](#)

Application Details

Application Notes: Optimal working dilution should be determined by the investigator.

Restrictions: For Research Use only

Handling

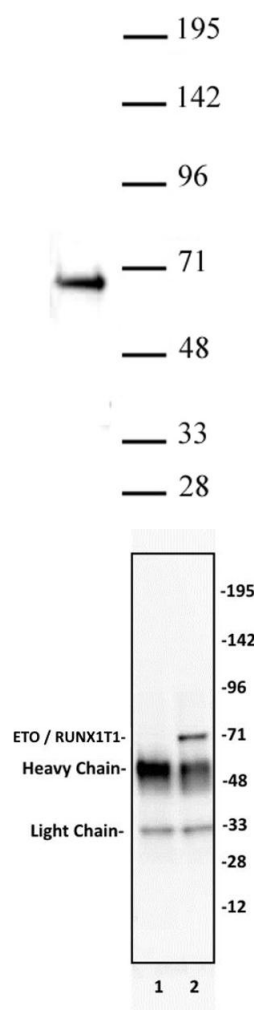
Buffer: Purified IgG in 70 mM Tris (pH 8), 105 mM NaCl, 31 mM glycine, 0.07 mM EDTA, 30 % glycerol and 0.035 % sodium azide.

Preservative: Sodium azide

Precaution of Use: This product contains Sodium azide: a POISONOUS AND HAZARDOUS SUBSTANCE which should be handled by trained staff only.

Storage: -20 °C

Storage Comment: Avoid repeated freeze/thaw cycles by aliquoting items into single-use fractions for storage at -20°C for up to 2 years. Keep all reagents on ice when not in storage.



Western Blotting

Image 1. ETO / RUNX1T1 antibody (pAb) tested by Western Blot: K-562 nuclear extract (20 μ g per lane) probed with the ETO / RUNX1T1 antibody (pAb) at a dilution of 1:500.

Immunoprecipitation

Image 2. ETO / RUNX1T1 antibody (pAb) tested by Immunoprecipitation. 10 μ L of ETO / RUNX1T1 antibody was used to immunoprecipitate ETO / RUNX1T1 from 250 μ g of K562 nuclear cell extract (lane 2). 10 μ L of rabbit IgG was used as a negative control (lane 1). The immunoprecipitated protein was detected by Western blotting using the ETO / RUNX1T1 antibody at a dilution of 1:500.