



Datasheet for ABIN6971640 anti-EZH1 antibody (N-Term)



[Go to Product page](#)

1 Image

Overview

Quantity:	100 µL
Target:	EZH1
Binding Specificity:	N-Term
Reactivity:	Mouse
Host:	Rabbit
Clonality:	Polyclonal
Conjugate:	This EZH1 antibody is un-conjugated
Application:	Western Blotting (WB)

Product Details

Immunogen:	This antibody was raised against a peptide within the N-terminal region of human EZH1.
Isotype:	IgG
Characteristics:	<p>EZH1 (Enhancer Of Zeste Homolog 1) is a Polycomb group (PcG) protein. Catalytic subunit of the PRC2/EED-EZH1 complex, which methylates 'Lys-27' of histone H3, leading to transcriptional repression of the affected target gene. Able to mono-, di- and trimethylate 'Lys-27' of histone H3 to form H3K27me1, H3K27me2 and H3K27me3, respectively. Required for embryonic stem cell derivation and self-renewal, suggesting that it is involved in safeguarding embryonic stem cell identity. Compared to EZH1-containing complexes, it is less abundant in embryonic stem cells, has weak methyltransferase activity and plays a less critical role in forming H3K27me3, which is required for embryonic stem cell identity and proper differentiation. EZH1 antibody (pAb) was raised in a Rabbit host. It has been validated for use in Western blot, it has been shown to react with Mouse samples.</p>

Product Details

Purification: Affinity Purified

Target Details

Target: EZH1

Alternative Name: EZH1 ([EZH1 Products](#))

Molecular Weight: 100 kDa

NCBI Accession: [NP_001982](#)

Application Details

Application Notes: Optimal working dilution should be determined by the investigator.

Restrictions: For Research Use only

Handling

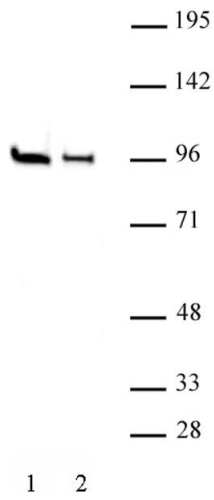
Buffer: Purified IgG in PBS with 30 % glycerol and 0.035 % sodium azide.

Preservative: Sodium azide

Precaution of Use: This product contains Sodium azide: a POISONOUS AND HAZARDOUS SUBSTANCE which should be handled by trained staff only.

Storage: -20 °C

Storage Comment: Avoid repeated freeze/thaw cycles by aliquoting items into single-use fractions for storage at -20°C for up to 2 years. Keep all reagents on ice when not in storage.



Western Blotting

Image 1. EZH1 antibody (pAb) tested by Western blot. Nuclear extract (20 µg) of P19 (Lane 1) and mouse ES cells (Lane 2) probed with EZH1 antibody at a 1:500 dilution.