



[Go to Product page](#)

Datasheet for ABIN6971678
anti-GATA6 antibody (N-Term)

2 Images

Overview

Quantity:	100 µL
Target:	GATA6
Binding Specificity:	N-Term
Reactivity:	Human
Host:	Rabbit
Clonality:	Polyclonal
Application:	Western Blotting (WB), Immunofluorescence (IF), Immunocytochemistry (ICC)

Product Details

Immunogen:	This GATA-6 antibody was raised against a peptide within the N-terminus of human GATA-6.
Isotype:	IgG
Characteristics:	GATA-6 (GATA binding factor 6) is a Zn-finger DNA binding transcription factor that is required for the expression of genes regulating formation of the primitive endoderm lineage. GATA-6, along with GATA-4, is a marker of extraembryonic endoderm. GATA-6 antibody (pAb) was raised in a Rabbit host. It has been validated for use in Immunocytochemistry, Immunofluorescence and Western blot, it has been shown to react with Human samples.
Purification:	Affinity Purified

Target Details

Target:	GATA6
Alternative Name:	GATA-6 (GATA6 Products)

Target Details

Molecular Weight: 62 kDa

NCBI Accession: [NP_005248](#)

Application Details

Application Notes: Optimal working dilution should be determined by the investigator.

Restrictions: For Research Use only

Handling

Buffer: Purified IgG in 70 mM Tris (pH 8), 105 mM NaCl, 31 mM glycine, 0.07 mM EDTA, 30 % glycerol and 0.035 % sodium azide.

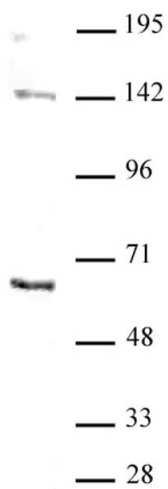
Preservative: Sodium azide

Precaution of Use: This product contains Sodium azide: a POISONOUS AND HAZARDOUS SUBSTANCE which should be handled by trained staff only.

Storage: -20 °C

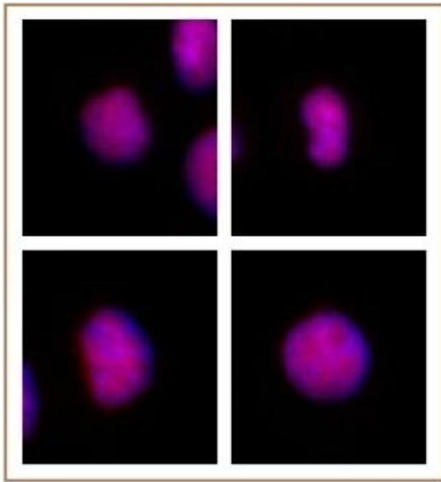
Storage Comment: Avoid repeated freeze/thaw cycles by aliquoting items into single-use fractions for storage at -20°C for up to 2 years. Keep all reagents on ice when not in storage.

Images



Western Blotting

Image 1. GATA-6 antibody (pAb) tested by Western blot. Nuclear extract (20 µg) of SW48 cells probed with GATA-6 antibody at a dilution of 1:500.



Immunofluorescence

Image 2. GATA-6 antibody (pAb) tested by immunofluorescence. Formaldehyde fixed HeLa cells stained with GATA-6 antibody at a 1:2,000 dilution.