

Datasheet for ABIN6971684  
**anti-GLI1 antibody (C-Term)**



[Go to Product page](#)

1 Image

## Overview

Quantity:	100 µL
Target:	GLI1
Binding Specificity:	C-Term
Reactivity:	Human
Host:	Rabbit
Clonality:	Polyclonal
Conjugate:	This GLI1 antibody is un-conjugated
Application:	Western Blotting (WB)

## Product Details

Immunogen:	This GLI1 antibody was raised against a peptide within the C-terminal region of human GLI1.
Isotype:	IgG
Characteristics:	<p>GLI1 (Glioma-associated oncogene 1) is a zinc finger transcription factor and oncogene. GLI1 is part of the hedgehog signaling pathway, but is also activated in response to TGF-<math>\beta</math> signaling as well. GLI1 activates transcription of a number of genes that promote cell cycle progression.</p> <p>GLI1 is overexpressed as a result of constitutive activation of hedgehog signaling, which plays a role in the initiation of cancer. GLI1 also promotes self-renewal of neural stem cells. GLI1 antibody (pAb) was raised in a Rabbit host. It has been validated for use in Western blot, it has been shown to react with Human samples.</p>
Purification:	Affinity Purified

## Target Details

Target:	GLI1
Alternative Name:	GLI1 ( <a href="#">GLI1 Products</a> )
Molecular Weight:	120 kDa
NCBI Accession:	<a href="#">NP_005260</a>
Pathways:	<a href="#">Hedgehog Signaling</a> , <a href="#">Dopaminergic Neurogenesis</a>

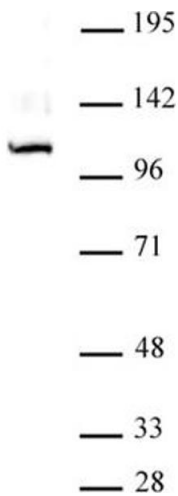
## Application Details

Application Notes:	Optimal working dilution should be determined by the investigator.
Restrictions:	For Research Use only

## Handling

Buffer:	Purified IgG in PBS with 30 % glycerol and 0.035 % sodium azide.
Preservative:	Sodium azide
Precaution of Use:	This product contains Sodium azide: a POISONOUS AND HAZARDOUS SUBSTANCE which should be handled by trained staff only.
Storage:	-20 °C
Storage Comment:	Avoid repeated freeze/thaw cycles by aliquoting items into single-use fractions for storage at -20°C for up to 2 years. Keep all reagents on ice when not in storage.

## Images



### Western Blotting

**Image 1.** GLI1 antibody (pAb) tested by Western blot. Nuclear extract of Raji cells (20 µg) probed with GLI1 antibody (pAb) at a dilution of 1:1,000.