

Datasheet for ABIN6971761
anti-H2AFJ antibody (AA 122-129)[Go to Product page](#)

2 Images

Overview

Quantity:	100 µL
Target:	H2AFJ
Binding Specificity:	AA 122-129
Reactivity:	Human, Mouse
Host:	Rabbit
Clonality:	Polyclonal
Conjugate:	This H2AFJ antibody is un-conjugated
Application:	Western Blotting (WB), Dot Blot (DB)

Product Details

Immunogen:	This antibody was raised against a peptide comprising amino acids 122-129 of human Histone H2A.J.
Isotype:	IgG
Characteristics:	Histone H2A is one of the core components of the nucleosome. The nucleosome is the smallest subunit of chromatin and consists of 147 base pairs of DNA wrapped around an octamer of core histone proteins (two each of Histone H2A, Histone H2B, Histone H3 and Histone H4). Histone H1 is a linker histone, present at the interface between the nucleosome core and DNA entry/exit points, and is responsible for establishing higher-order chromatin structure. Histone H2A.J is a histone H2A variant, a protein similar to canonical H2A but with different molecular identity and unique functions. Histone H2A.J, which is found only in mammals, is shown to be associated with senescence, accumulating in senescent fibroblasts and promoting expression of inflammatory genes. Therefore, H2A.J may contribute to chronic

Product Details

inflammation and age-related diseases. Histone H2A.J antibody (pAb) was raised in a Rabbit host. It has been validated for use in Dot blot and Western blot, it has been shown to react with Human and Mouse samples.

Purification: Affinity Purified

Target Details

Target: H2AFJ

Alternative Name: Histone H2A.J ([H2AFJ Products](#))

NCBI Accession: [NP_808760](#)

Application Details

Application Notes: Optimal working dilution should be determined by the investigator.

Restrictions: For Research Use only

Handling

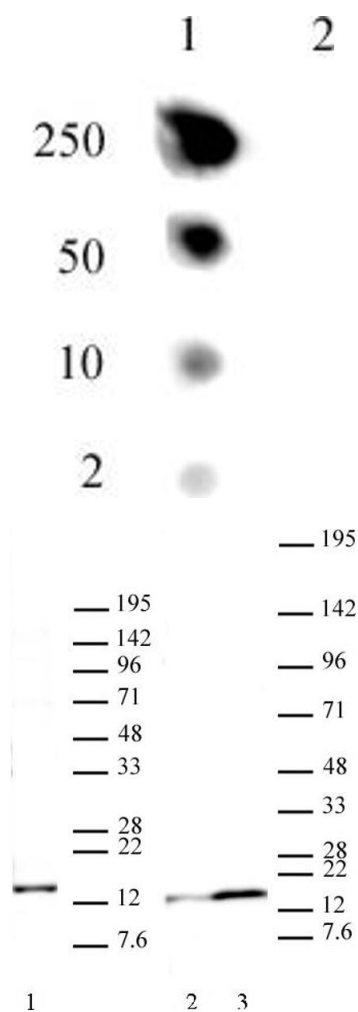
Buffer: Purified IgG in PBS with 30 % glycerol and 0.035 % sodium azide.

Preservative: Sodium azide

Precaution of Use: This product contains Sodium azide: a POISONOUS AND HAZARDOUS SUBSTANCE which should be handled by trained staff only.

Storage: -20 °C

Storage Comment: Avoid repeated freeze/thaw cycles by aliquoting items into single-use fractions for storage at -20°C for up to 2 years. Keep all reagents on ice when not in storage.



Dot Blot

Image 1. Dot blot of Histone H2A.J pAb. Dot blot analysis was used to confirm the specificity of Histone H2A.J antibody. Lane 1: H2A.J peptide. Lane 2: H2A peptide comprised of a.a. 114-126 of human Histone H2A.

Western Blotting

Image 2. Western blot of Histone H2A.J pAb. 20 µg Nuclear Extract of HeLa cells (Lane 1) or 40 µg mouse 3T3-L1 cells before (Lane 2) or following stimulation for 12 days with a defined hormonal mixture (DMSO, dexamethasone, insulin, and IBMX) resulting in differentiation into adipocytes (Lane 3). MW:14kD