

Datasheet for ABIN6972238  
**anti-JMJD6 antibody (N-Term)**

## 1 Image

[Go to Product page](#)

## Overview

Quantity:	100 µL
Target:	JMJD6
Binding Specificity:	N-Term
Reactivity:	Human
Host:	Rabbit
Clonality:	Polyclonal
Application:	Western Blotting (WB)

## Product Details

Immunogen:	This antibody was raised against a peptide within the N-terminal region of human JMJD6.
Isotype:	IgG
Characteristics:	JMJD6 (Jumonji Domain-Containing Protein 6) is a dioxygenase that can both act as a histone arginine demethylase and a lysyl-hydroxylase. JMJD6 acts as an arginine demethylase which demethylates histone H3 at 'Arg-2' (H3R2me) and histone H4 at 'Arg-3' (H4R3me), thereby playing a role in histone code. Required for differentiation of multiple organs during embryogenesis and acts as a key regulator of hematopoietic differentiation. May act as a RNA hydroxylase, as suggested by its ability to bind single strand RNA. JMJD6 antibody (pAb) was raised in a Rabbit host. It has been validated for use in Western blot, it has been shown to react with Human samples.
Purification:	Affinity Purified

## Target Details

Target:	JMJD6
Alternative Name:	JMJD6 ( <a href="#">JMJD6 Products</a> )
Molecular Weight:	52 kDa
NCBI Accession:	<a href="#">NP_001074930</a>

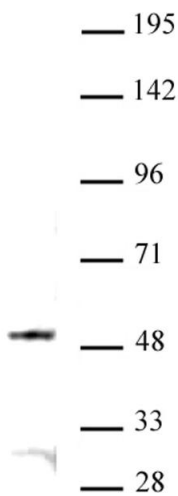
## Application Details

Application Notes:	Optimal working dilution should be determined by the investigator.
Restrictions:	For Research Use only

## Handling

Buffer:	Purified IgG in PBS with 30 % glycerol and 0.035 % sodium azide.
Preservative:	Sodium azide
Precaution of Use:	This product contains Sodium azide: a POISONOUS AND HAZARDOUS SUBSTANCE which should be handled by trained staff only.
Storage:	-20 °C
Storage Comment:	Avoid repeated freeze/thaw cycles by aliquoting items into single-use fractions for storage at -20°C for up to 2 years. Keep all reagents on ice when not in storage.

## Validation report #104457 for Cleavage Under Targets and Release Using Nuclease (CUT&RUN)



### Western Blotting

**Image 1.** JMJD6 antibody (pAb) tested by Western blot. Nuclear extract of Raji cells (20 µg) probed with JMJD6 antibody (pAb) at a dilution of 1:500.