

Datasheet for ABIN6972250
anti-KDM1B antibody (N-Term)[Go to Product page](#)

1 Image

Overview

Quantity:	100 µL
Target:	KDM1B
Binding Specificity:	N-Term
Reactivity:	Mouse
Host:	Rabbit
Clonality:	Polyclonal
Application:	Western Blotting (WB)

Product Details

Immunogen:	This antibody was raised against a peptide within the N-terminal region of mouse KDM1B / LSD2.
Isotype:	IgG
Characteristics:	KDM1B / LSD2 (Lysine (K)-Specific Demethylase 1B / Lysine-Specific Histone Demethylase 2) is a histone demethylase that demethylates 'Lys-4' of histone H3, a specific tag for epigenetic transcriptional activation, thereby acting as a corepressor. Required for de novo DNA methylation of a subset of imprinted genes during oogenesis. Demethylates both mono- and di-methylated 'Lys-4' of histone H3. Has no effect on tri-methylated 'Lys-4', mono-, di- or tri-methylated 'Lys-9', mono-, di- or tri-methylated 'Lys-27', mono-, di- or tri-methylated 'Lys-36' of histone H3, or on mono-, di- or tri-methylated 'Lys-20' of histone H4 (By similarity). KDM1B / LSD2 antibody (pAb) was raised in a Rabbit host. It has been validated for use in Western blot, it has been shown to react with Mouse samples.
Purification:	Affinity Purified

Target Details

Target:	KDM1B
Alternative Name:	KDM1B / LSD2 (KDM1B Products)
Molecular Weight:	93 kDa
NCBI Accession:	NP_758466
Pathways:	Warburg Effect

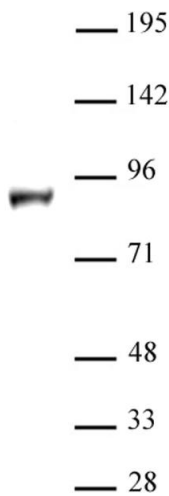
Application Details

Application Notes:	Optimal working dilution should be determined by the investigator.
Restrictions:	For Research Use only

Handling

Buffer:	Purified IgG in PBS with 30 % glycerol and 0.035 % sodium azide.
Preservative:	Sodium azide
Precaution of Use:	This product contains Sodium azide: a POISONOUS AND HAZARDOUS SUBSTANCE which should be handled by trained staff only.
Storage:	-20 °C
Storage Comment:	Avoid repeated freeze/thaw cycles by aliquoting items into single-use fractions for storage at -20°C for up to 2 years. Keep all reagents on ice when not in storage.

Images



Western Blotting

Image 1. KDM1B / LSD2 antibody (pAb) tested by Western blot. Nuclear extract of NIH3T3 cells (40 µg) probed with KDM1B / LSD2 antibody (pAb) at a dilution of 1:500.