



[Go to Product page](#)

Datasheet for ABIN6972254  
**anti-KDM4C antibody**

1 Image

### Overview

Quantity:	100 µL
Target:	KDM4C
Reactivity:	Monkey
Host:	Rabbit
Clonality:	Polyclonal
Application:	Western Blotting (WB)

### Product Details

Immunogen:	This antibody was raised against a peptide within human KDM4C.
Isotype:	IgG
Characteristics:	<p>KDM4C (Lysine (K)-Specific Demethylase 4C) is a histone demethylase that specifically demethylates 'Lys-9' and 'Lys-36' residues of histone H3, thereby playing a central role in histone code. Does not demethylate histone H3 'Lys-4', H3 'Lys-27' nor H4 'Lys-20'.</p> <p>Demethylates trimethylated H3 'Lys-9' and H3 'Lys-36' residue, while it has no activity on mono- and dimethylated residues. Demethylation of Lys residue generates formaldehyde and succinate. KDM4C antibody (pAb) was raised in a Rabbit host. It has been validated for use in Western blot, it has been shown to react with Monkey samples.</p>
Purification:	Affinity Purified

### Target Details

Target:	KDM4C
---------	-------

## Target Details

Alternative Name:	KDM4C ( <a href="#">KDM4C Products</a> )
Molecular Weight:	142 kDa
NCBI Accession:	<a href="#">NP_055876</a>
Pathways:	<a href="#">Nuclear Hormone Receptor Binding</a> , <a href="#">Warburg Effect</a>

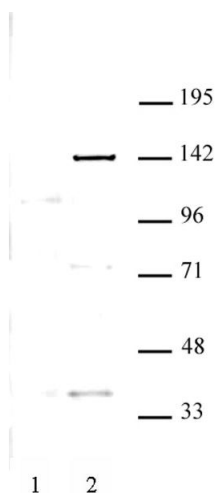
## Application Details

Application Notes:	Optimal working dilution should be determined by the investigator.
Restrictions:	For Research Use only

## Handling

Buffer:	Purified IgG in PBS with 30 % glycerol and 0.035 % sodium azide.
Preservative:	Sodium azide
Precaution of Use:	This product contains Sodium azide: a POISONOUS AND HAZARDOUS SUBSTANCE which should be handled by trained staff only.
Storage:	-20 °C
Storage Comment:	Avoid repeated freeze/thaw cycles by aliquoting items into single-use fractions for storage at -20°C for up to 2 years. Keep all reagents on ice when not in storage.

## Images



### Western Blotting

**Image 1.** KDM4C antibody (pAb) tested by Western blot. COS-7 nuclear extract (25 µg per lane) was probed with KDM4C pAb at a 1:500 dilution. Lane 1: No treatment. Lane 2: Cells treated with CoCl<sub>2</sub>.