



[Go to Product page](#)

Datasheet for ABIN6972262  
**anti-KLF5 antibody (N-Term)**

3 Images

Overview

Quantity:	100 µL
Target:	KLF5
Binding Specificity:	N-Term
Reactivity:	Human, Mouse
Host:	Rabbit
Clonality:	Polyclonal
Application:	Western Blotting (WB), Immunofluorescence (IF), Immunocytochemistry (ICC), ChIP DNA-Sequencing (ChIP-seq), Chromatin Immunoprecipitation (ChIP)

Product Details

Immunogen:	This KLF5 antibody was raised against a peptide derived from the N-terminus of mouse KLF5 (Krueppel-like factor 5).
Isotype:	IgG
Characteristics:	KLF5 (Krueppel-like factor 5, IKLF, Basic transcription element-binding protein 2, BTEB2) is a zinc-finger transcription factor that plays a role in cell proliferation, differentiation, cell cycle regulation, angiogenesis, and carcinogenesis and is especially important in epithelial cells. KLF5 (along with KLF2 and KLF4) are highly expressed in undifferentiated mouse embryonic stem cells and downregulated during early stages of differentiation. KLF5 and KLF2 can substitute for KLF4 in the reprogramming of differentiated cells into stem cells. KLF5 has a pro-proliferative role in cells and loss of both alleles of KLF5 is embryonic lethal. KLF5 antibody (pAb) was raised in a Rabbit host. It has been validated for use in Chromatin Immunoprecipitation, ChIP-Seq, Immunocytochemistry, Immunofluorescence and Western blot,

## Product Details

---

it has been shown to react with Human and Mouse samples.

Purification: Affinity Purified

## Target Details

---

Target: KLF5

Alternative Name: KLF5 ([KLF5 Products](#))

Molecular Weight: 65 kDa

NCBI Accession: [NP\\_033899](#)

## Application Details

---

Application Notes: Optimal working dilution should be determined by the investigator.

Restrictions: For Research Use only

## Handling

---

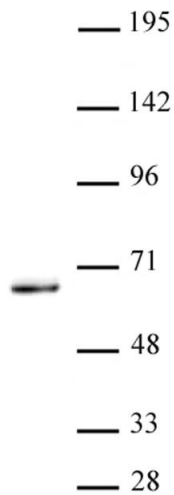
Buffer: Purified IgG in 70 mM Tris ( pH 8), 105 mM NaCl, 31 mM glycine, 0.07 mM EDTA, 30 % glycerol and 0.035 % sodium azide.

Preservative: Sodium azide

Precaution of Use: This product contains Sodium azide: a POISONOUS AND HAZARDOUS SUBSTANCE which should be handled by trained staff only.

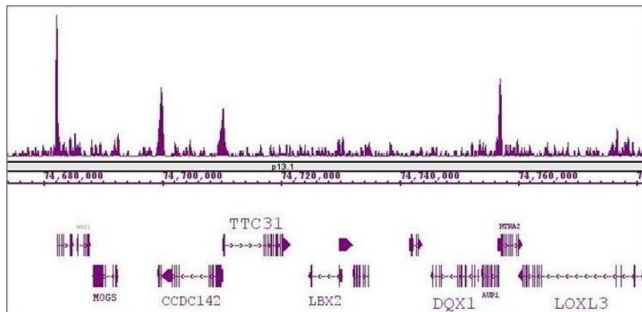
Storage: -20 °C

Storage Comment: Avoid repeated freeze/thaw cycles by aliquoting items into single-use fractions for storage at -20°C for up to 2 years. Keep all reagents on ice when not in storage.



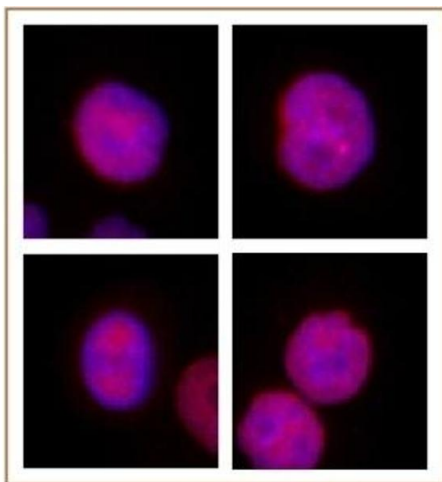
### Western Blotting

**Image 1.** KLF5 antibody (pAb) tested by Western Blot. Nuclear extract of K-562 cells (20 µg) probed with the KLF5 antibody (pAb) at a dilution of 1:1,000.



### ChIP DNA-Sequencing

**Image 2.** KLF5 antibody (pAb) tested by ChIP-Seq. ChIP was performed using the ChIP-IT High Sensitivity Kit with 30 µg of chromatin from an adenocarcinoma cell line and 5 µL of antibody. ChIP DNA was sequenced on the Illumina HiSeq and 24 million sequence tags were mapped to identify KLF5 binding sites. The image shows binding across a region of chromosome 2. You can view the complete data set in the UCSC Genome Browser, starting at this specific location, [here](#).



### Immunofluorescence

**Image 3.** KLF5 antibody (pAb) tested by Immunofluorescence. Formaldehyde fixed HeLa cells stained with KLF5 antibody at a 1:2,000 dilution.