

Datasheet for ABIN6972268
anti-MLL5/KMT2E antibody[Go to Product page](#)

1 Image

Overview

Quantity:	100 µL
Target:	MLL5/KMT2E (MLL5)
Reactivity:	Human, Mouse
Host:	Rabbit
Clonality:	Polyclonal
Application:	Western Blotting (WB)

Product Details

Immunogen:	This antibody was raised against a peptide within human KMT2E (MLL5).
Isotype:	IgG
Characteristics:	<p>KMT2E (MLL5) (myeloid/lymphoid or mixed-lineage leukemia 5 (trithorax homolog, Drosophila / lysine N-methyltransferase 2E)) is a histone methyltransferase that specifically mono- and dimethylates 'Lys-4' of histone H3 (H3K4me1 and H3K4me2). H3 'Lys-4' methylation represents a specific tag for epigenetic transcriptional activation. Key regulator of hematopoiesis involved in terminal myeloid differentiation and in the regulation of hematopoietic stem cell (HSCs) self-renewal by a mechanism that involves DNA methylation. Plays an essential role in retinoic-acid-induced granulopoiesis by acting as a coactivator of RAR-alpha (RARA) in target gene promoters. Also acts as an important cell cycle regulator, participating in cell cycle regulatory network machinery at multiple cell cycle stages. Required to suppress inappropriate expression of S-phase-promoting genes and maintain expression of determination genes in quiescent cells. Overexpression inhibits cell cycle progression, while knockdown induces cell cycle arrest at both the G1 and G2/M phases. KMT2E (MLL5) antibody (pAb) was raised in a Rabbit host. It</p>

Product Details

has been validated for use in Western blot, it has been shown to react with Human and Mouse samples.

Purification: Affinity Purified

Target Details

Target: MLL5/KMT2E (MLL5)

Alternative Name: KMT2E (MLL5) ([MLL5 Products](#))

Molecular Weight: 85 kDa

NCBI Accession: [NP_891847](#)

Pathways: [Retinoic Acid Receptor Signaling Pathway](#), [Warburg Effect](#)

Application Details

Application Notes: Optimal working dilution should be determined by the investigator.

Restrictions: For Research Use only

Handling

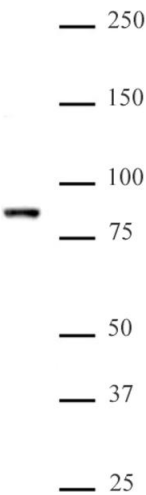
Buffer: Purified IgG in PBS with 30 % glycerol and 0.035 % sodium azide.

Preservative: Sodium azide

Precaution of Use: This product contains Sodium azide: a POISONOUS AND HAZARDOUS SUBSTANCE which should be handled by trained staff only.

Storage: -20 °C

Storage Comment: Avoid repeated freeze/thaw cycles by aliquoting items into single-use fractions for storage at -20°C for up to 2 years. Keep all reagents on ice when not in storage.



Western Blotting

Image 1. KMT2E (MLL5) (pAb) tested by Western blot. Detection of KMT2E (MLL5) by Western blot analysis. Nuclear extract of mouse testis (40 µg) was probed with KMT2E (MLL5) (pAb) at a 1:2,000 dilution.