

Datasheet for ABIN6972290  
**anti-LIN28A antibody (C-Term)**

## 2 Images

[Go to Product page](#)

## Overview

|                      |   |
|----------------------|---|
| Quantity:            | 100 µL  |
| Target:              | LIN28A  |
| Binding Specificity: | C-Term  |
| Reactivity:          | Human, Mouse  |
| Host:                | Rabbit  |
| Clonality:           | Polyclonal  |
| Application:         | Western Blotting (WB), Immunofluorescence (IF), Immunocytochemistry (ICC) |

## Product Details

|                  |  |
|------------------|--|
| Immunogen:       | This LIN28A antibody was raised against a peptide derived from the C-terminal region of human LIN28A.  |
| Isotype:         | IgG  |
| Characteristics: | LIN28 is an evolutionarily conserved RNA-binding protein that serves as a marker of undifferentiated human embryonic stem cells. LIN28 can facilitate the reprogramming of human somatic cells to induced pluripotent stem cells (iPSCs). LIN28A antibody (pAb) was raised in a Rabbit host. It has been validated for use in Immunocytochemistry, Immunofluorescence and Western blot, it has been shown to react with Human and Mouse samples. |
| Purification:    | Affinity Purified  |

## Target Details

|                   |  |
|-------------------|--|
| Target:           | LIN28A                                     |
| Alternative Name: | LIN28A ( <a href="#">LIN28A Products</a> ) |
| Molecular Weight: | 30 kDa                                     |
| NCBI Accession:   | <a href="#">NP_665832</a>                  |
| Pathways:         | <a href="#">Stem Cell Maintenance</a>      |

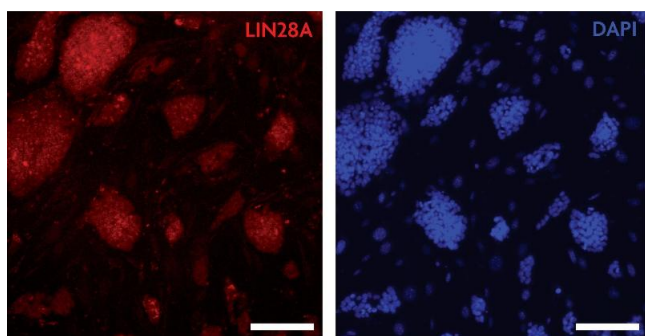
## Application Details

|                    |  |
|--------------------|--|
| Application Notes: | Optimal working dilution should be determined by the investigator. |
| Restrictions:      | For Research Use only  |

## Handling

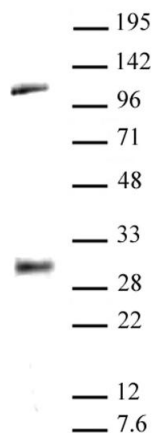
|                    |   |
|--------------------|---|
| Buffer:            | Purified IgG in PBS with 30 % glycerol and 0.035 % sodium azide.  |
| Preservative:      | Sodium azide  |
| Precaution of Use: | This product contains Sodium azide: a POISONOUS AND HAZARDOUS SUBSTANCE which should be handled by trained staff only.  |
| Storage:           | -20 °C  |
| Storage Comment:   | Avoid repeated freeze/thaw cycles by aliquoting items into single-use fractions for storage at -20°C for up to 2 years. Keep all reagents on ice when not in storage. |

## Images



### Immunocytochemistry

**Image 1.** LIN28A antibody (pAb) tested by Immunocytochemistry Mouse embryonic stem cells (mESCs) grown on mouse embryonic fibroblast feeder cells (MEFs) were fixed with 4 % paraformaldehyde for 10 minutes at room temperature. Cells were then permeabilized and blocked by incubating with Blocking Solution containing 5 % serum/0.1 % Triton X-100 in D-PBS for 2 hours at room temperature. Cells were then incubated with LIN28A antibody at 1:200 dilution overnight at 4 °C (left



panel). Nuclei were stained with DAPI (right panel). Images show that LIN28A antibody specifically stains mESC colonies and does not stain MEFs. Absence of LIN28A staining in a subset of cells within the colonies suggests differentiation.

Western Blotting

**Image 2.** LIN28A antibody (pAb) tested by Western blot. Cytosolic extract (40 µg) of mouse ES cells probed with LIN28A antibody at a dilution of 1:500.