

Datasheet for ABIN6972331
anti-MED1 antibody (C-Term)



[Go to Product page](#)

2 Images

Overview

Quantity:	100 µL
Target:	MED1
Binding Specificity:	C-Term
Reactivity:	Human
Host:	Rabbit
Clonality:	Polyclonal
Conjugate:	This MED1 antibody is un-conjugated
Application:	Western Blotting (WB), Immunoprecipitation (IP)

Product Details

Immunogen:	This MED1 antibody was raised against a peptide within the C-terminal region of human MED1.
Isotype:	IgG
Characteristics:	<p>MED1 (Mediator complex subunit 1, TRIP2, Thyroid receptor-interacting protein 2) is a component of the Mediator complex, a coactivator involved in the regulated transcription of most genes transcribed by RNA polymerase II. Mediator functions as a bridge to convey information from gene-specific regulatory proteins to the basal RNA polymerase II transcription machinery. Mediator is recruited to promoters by direct interactions with regulatory proteins and serves as a scaffold for the assembly of a functional pre-initiation complex with RNA polymerase II and the general transcription factors. MED1 is involved in supporting hematopoietic stem and/or progenitor cell function. MED1 antibody (pAb) was raised in a Rabbit host. It has been validated for use in Immunoprecipitation and Western blot, it has been shown to react with Human samples.</p>

Product Details

Purification: Affinity Purified

Target Details

Target: MED1

Alternative Name: MED1 ([MED1 Products](#))

Molecular Weight: 210 kDa

NCBI Accession: [NP_004765](#)

Pathways: [Nuclear Receptor Transcription Pathway](#), [Intracellular Steroid Hormone Receptor Signaling Pathway](#), [Regulation of Intracellular Steroid Hormone Receptor Signaling](#), [Nuclear Hormone Receptor Binding](#), [Chromatin Binding](#), [Regulation of Lipid Metabolism by PPARAlpha](#)

Application Details

Application Notes: Optimal working dilution should be determined by the investigator.

Restrictions: For Research Use only

Handling

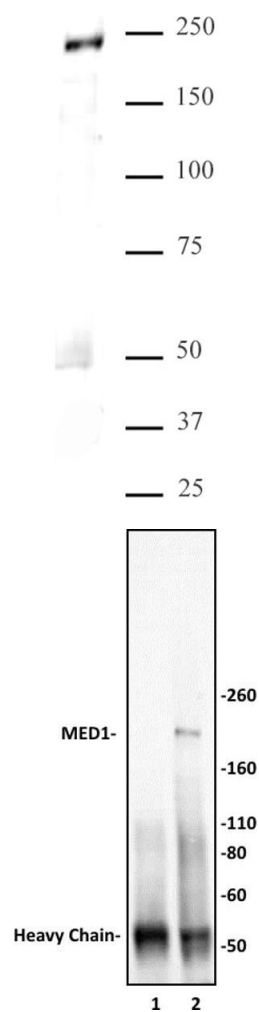
Buffer: Purified IgG in 70 mM Tris (pH 8), 105 mM NaCl, 31 mM glycine, 0.07 mM EDTA, 30 % glycerol and 0.035 % sodium azide.

Preservative: Sodium azide

Precaution of Use: This product contains Sodium azide: a POISONOUS AND HAZARDOUS SUBSTANCE which should be handled by trained staff only.

Storage: -20 °C

Storage Comment: Avoid repeated freeze/thaw cycles by aliquoting items into single-use fractions for storage at -20°C for up to 2 years. Keep all reagents on ice when not in storage.



Western Blotting

Image 1. MED1 antibody (pAb) tested by Western blot. Nuclear extract (30 μ g) of HeLa cells probed with MED1 antibody at a dilution of 1:2,000.

Immunoprecipitation

Image 2. MED1 antibody (pAb) tested by Immunoprecipitation. 10 μ L of MED1 antibody was used to immunoprecipitate MED1 from 250 μ g of HeLa nuclear cell extract (lane 2). 10 μ L of rabbit IgG was used as a negative control (lane 1). The immunoprecipitated protein was detected by Western blotting using the MED1 antibody at a dilution of 1:2,000.