

Datasheet for ABIN6972333
anti-MED15 antibody (C-Term)[Go to Product page](#)

2 Images

Overview

Quantity:	100 µL
Target:	MED15
Binding Specificity:	C-Term
Reactivity:	Human
Host:	Rabbit
Clonality:	Polyclonal
Conjugate:	This MED15 antibody is un-conjugated
Application:	Western Blotting (WB), Immunoprecipitation (IP)

Product Details

Immunogen:	This antibody was raised against a peptide within the C-terminal region of human MED15.
Isotype:	IgG
Characteristics:	<p>MED15 (mediator of RNA polymerase II transcription subunit 15) is a component of the Mediator complex, a coactivator involved in the regulated transcription of nearly all RNA polymerase II-dependent genes. Mediator functions as a bridge to convey information from gene-specific regulatory proteins to the basal RNA polymerase II transcription machinery. Mediator is recruited to promoters by direct interactions with regulatory proteins and serves as a scaffold for the assembly of a functional preinitiation complex with RNA polymerase II and the general transcription factors. Required for cholesterol-dependent gene regulation. Positively regulates the Nodal signaling pathway. MED15 antibody (pAb) was raised in a Rabbit host. It has been validated for use in Immunoprecipitation and Western blot, it has been shown to react with Human samples.</p>

Product Details

Purification: Affinity Purified

Target Details

Target: MED15

Alternative Name: MED15 ([MED15 Products](#))

Molecular Weight: 100 kDa

NCBI Accession: [NP_001003891](#)

Pathways: [Stem Cell Maintenance](#), [Regulation of Lipid Metabolism by PPARalpha](#)

Application Details

Application Notes: Optimal working dilution should be determined by the investigator.

Restrictions: For Research Use only

Handling

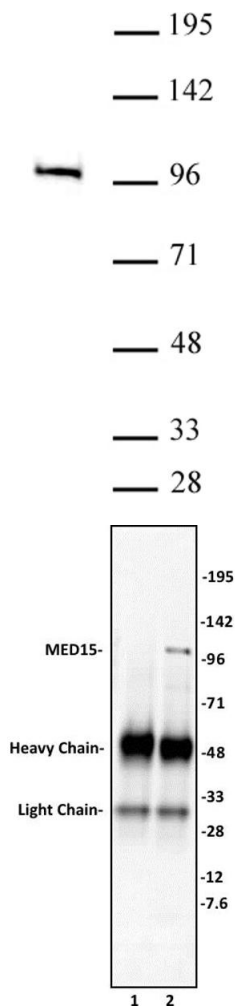
Buffer: Purified IgG in PBS with 30 % glycerol and 0.035 % sodium azide.

Preservative: Sodium azide

Precaution of Use: This product contains Sodium azide: a POISONOUS AND HAZARDOUS SUBSTANCE which should be handled by trained staff only.

Storage: -20 °C

Storage Comment: Avoid repeated freeze/thaw cycles by aliquoting items into single-use fractions for storage at -20°C for up to 2 years. Keep all reagents on ice when not in storage.



Western Blotting

Image 1. MED15 antibody (pAb) tested by Western blot. HeLa whole-cell extract (20 µg) probed with MED15 antibody at a dilution of 1:1,000.

Immunoprecipitation

Image 2. MED15 antibody (pAb) tested by Immunoprecipitation. 10 µL of MED15 antibody was used to immunoprecipitate MED15 from 400 µg of HeLa whole cell extract (lane 2). 10 µL of rabbit IgG was used as a negative control (lane 1). The immunoprecipitated protein was detected by Western blotting using the MED15 antibody at a dilution of 1:1,000.