

Datasheet for ABIN6972410

**anti-NCAPH2 antibody****2** Images[Go to Product page](#)

## Overview

Quantity:	100 µg
Target:	NCAPH2
Reactivity:	Human
Host:	Rat
Clonality:	Monoclonal
Application:	Western Blotting (WB), Immunofluorescence (IF), Immunocytochemistry (ICC)

## Product Details

Immunogen:	This antibody was raised against a recombinant protein to human NCAPH2.
Clone:	5F2G4
Isotype:	IgG2a
Characteristics:	NCAPH2 (Non-SMC Condensin II Complex, Subunit H2) Regulatory subunit of the condensin-2 complex, a complex that seems to provide chromosomes with an additional level of organization and rigidity and in establishing mitotic chromosome architecture. May play a role in lineage-specific role in T-cell development. (By similarity) NCAPH2 antibody (mAb) (Clone 5F2G4) was raised in a Rat host. It has been validated for use in Immunocytochemistry, Immunofluorescence and Western blot, it has been shown to react with Human samples.
Purification:	Protein G Chromatography

## Target Details

Target:	NCAPH2
---------	--------

## Target Details

Alternative Name:	NCAPH2 ( <a href="#">NCAPH2 Products</a> )
Molecular Weight:	90 kDa
NCBI Accession:	<a href="#">NP_001171940</a>

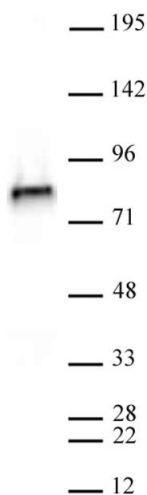
## Application Details

Application Notes:	Optimal working dilution should be determined by the investigator.
Restrictions:	For Research Use only

## Handling

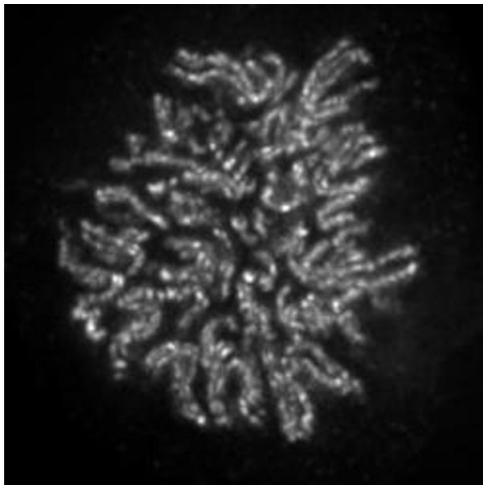
Buffer:	Purified IgG in PBS with 30 % glycerol and 0.035 % sodium azide.
Preservative:	Sodium azide
Precaution of Use:	This product contains Sodium azide: a POISONOUS AND HAZARDOUS SUBSTANCE which should be handled by trained staff only.
Storage:	-20 °C
Storage Comment:	Avoid repeated freeze/thaw cycles by aliquoting items into single-use fractions for storage at -20°C for up to 2 years. Keep all reagents on ice when not in storage.

## Images



### Western Blotting

**Image 1.** NCAPH2 antibody (mAb) (Clone 5F2G4) tested by Western blot. NCAPH2 antibody detection by Western blot. The analysis was performed using 30 µg of HeLa nuclear extract and NCAPH2 antibody at a 1 µg/mL dilution.



#### Immunofluorescence

**Image 2.** NCAPH2 antibody (mAb) (Clone 5F2G4) tested by immunofluorescence. Formaldehyde fixed HeLa cell stained with the NCAPH2 antibody.