

Datasheet for ABIN6972419  
**anti-NFAT1 antibody (N-Term)**

## 2 Images

[Go to Product page](#)

## Overview

Quantity:	100 µL
Target:	NFAT1
Binding Specificity:	N-Term
Reactivity:	Human
Host:	Rabbit
Clonality:	Polyclonal
Application:	Western Blotting (WB), Immunoprecipitation (IP)

## Product Details

Immunogen:	This antibody was raised against a peptide within the N-terminal region of human NFATC2.
Isotype:	IgG
Characteristics:	NFATC2 (Nuclear Factor Of Activated T-Cells, Cytoplasmic, Calcineurin-Dependent 2) plays a role in the inducible expression of cytokine genes in T-cells, especially in the induction of the IL-2, IL-3, IL-4, TNF-alpha or GM-CSF. Promotes invasive migration through the activation of GPC6 expression and WNT5A signaling pathway. NFATC2 antibody (pAb) was raised in a Rabbit host. It has been validated for use in Immunoprecipitation and Western blot, it has been shown to react with Human samples.
Purification:	Affinity Purified

## Target Details

Target:	NFAT1
---------	-------

## Target Details

Alternative Name:	NFATC2 ( <a href="#">NFAT1 Products</a> )
Molecular Weight:	120 kDa
NCBI Accession:	<a href="#">NP_036472</a>
Pathways:	<a href="#">RTK Signaling</a> , <a href="#">WNT Signaling</a> , <a href="#">Fc-epsilon Receptor Signaling Pathway</a> , <a href="#">VEGF Signaling</a> , <a href="#">BCR Signaling</a>

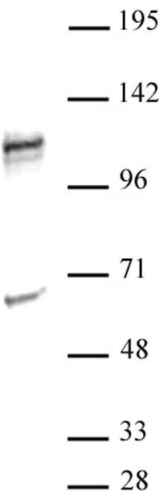
## Application Details

Application Notes:	Optimal working dilution should be determined by the investigator.
Restrictions:	For Research Use only

## Handling

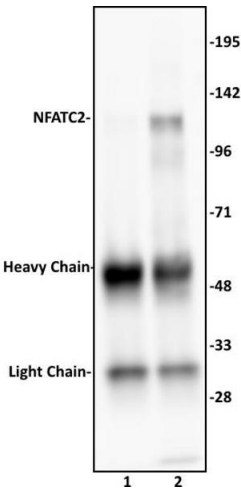
Buffer:	Purified IgG in PBS with 30 % glycerol and 0.035 % sodium azide.
Preservative:	Sodium azide
Precaution of Use:	This product contains Sodium azide: a POISONOUS AND HAZARDOUS SUBSTANCE which should be handled by trained staff only.
Storage:	-20 °C
Storage Comment:	Avoid repeated freeze/thaw cycles by aliquoting items into single-use fractions for storage at -20°C for up to 2 years. Keep all reagents on ice when not in storage.

## Images



### Western Blotting

**Image 1.** NFATC2 antibody (pAb) tested by Western blot. Detection of NFATC2 by Western blot analysis. NFATC2 was detected using a 1:500 dilution of NFATC2 (pAb) with 30 µg of Ramos nuclear extract.



**Immunoprecipitation**

**Image 2.** NFATC2 antibody (pAb) tested by Immunoprecipitation. 10  $\mu$ L of NFATC2 antibody was used to immunoprecipitate NFATC2 from 500  $\mu$ g of Raji nuclear cell extract (lane 2). 10  $\mu$ L of rabbit IgG was used as a negative control (lane 1). The immunoprecipitated protein was detected by Western blotting using the NFATC2 antibody at a dilution of 1:500.