

Datasheet for ABIN6972489
anti-PAX5 antibody (N-Term)



[Go to Product page](#)

1 Image

Overview

Quantity:	100 µL
Target:	PAX5
Binding Specificity:	N-Term
Reactivity:	Human
Host:	Rabbit
Clonality:	Polyclonal
Application:	Western Blotting (WB)

Product Details

Immunogen:	This antibody was raised against a peptide within the N-terminal region of human PAX5.
Isotype:	IgG
Characteristics:	<p>PAX5 (paired box 5) is a member of the paired box family of transcription factors. PAX5 plays an important role in B-cell differentiation as well as neural development and spermatogenesis. Involved in the regulation of the CD19 gene, a B-lymphoid-specific target gene. PAX5 antibody (pAb) was raised in a Rabbit host. It has been validated for use in Western blot, it has been shown to react with Human samples.</p>
Purification:	Affinity Purified

Target Details

Target:	PAX5
Alternative Name:	PAX5 (PAX5 Products)

Target Details

Molecular Weight:	50 kDa
NCBI Accession:	NP_057953

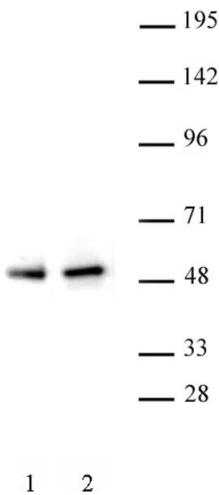
Application Details

Application Notes:	Optimal working dilution should be determined by the investigator.
Restrictions:	For Research Use only

Handling

Buffer:	Purified IgG in PBS with 30 % glycerol and 0.035 % sodium azide.
Preservative:	Sodium azide
Precaution of Use:	This product contains Sodium azide: a POISONOUS AND HAZARDOUS SUBSTANCE which should be handled by trained staff only.
Storage:	-20 °C
Storage Comment:	Avoid repeated freeze/thaw cycles by aliquoting items into single-use fractions for storage at -20°C for up to 2 years. Keep all reagents on ice when not in storage.

Images



Western Blotting

Image 1. PAX5 antibody (pAb) tested by Western blot. Detection of PAX5 by Western blot. Lane 1: Raji nuclear cell extract (20 µg). Lane 2: Ramos nuclear cell extract (10 µg). Both probed with PAX5 antibody (pAb) at a 1:500 dilution.