

Datasheet for ABIN6972497

**anti-Polybromo 1 antibody (N-Term)****2** Images[Go to Product page](#)

## Overview

Quantity:	100 µL
Target:	Polybromo 1 (PBRM1)
Binding Specificity:	N-Term
Reactivity:	Human, Mouse
Host:	Rabbit
Clonality:	Polyclonal
Application:	Western Blotting (WB), ChIP DNA-Sequencing (ChIP-seq)

## Product Details

Immunogen:	This antibody was raised against a peptide within the N-terminal region of human PBRM1.
Isotype:	IgG
Characteristics:	PBRM1 (polybromo 1) is a component of the SWI/SNF-B (PBAF) ATP-dependent chromatin-remodeling complex. It is involved in transcriptional activation and repression of select genes by chromatin remodeling and is an integral component of complexes necessary for ligand-dependent transcriptional activation by nuclear hormone receptors. Defects in PBRM1 have been associated with primary clear cell renal cell carcinoma. PBRM1 antibody (pAb) was raised in a Rabbit host. It has been validated for use in ChIP-Seq and Western blot, it has been shown to react with Human and Mouse samples.
Purification:	Affinity Purified

## Target Details

Target:	Polybromo 1 (PBRM1)
Alternative Name:	PBRM1 ( <a href="#">PBRM1 Products</a> )
Molecular Weight:	180 kDa
NCBI Accession:	<a href="#">NP_060783</a>

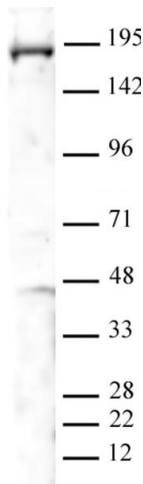
## Application Details

Application Notes:	Optimal working dilution should be determined by the investigator.
Restrictions:	For Research Use only

## Handling

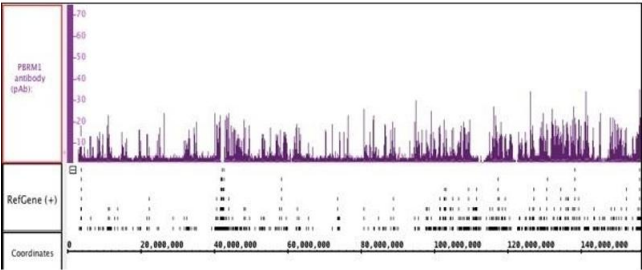
Buffer:	Purified IgG in PBS with 30 % glycerol and 0.035 % sodium azide.
Preservative:	Sodium azide
Precaution of Use:	This product contains Sodium azide: a POISONOUS AND HAZARDOUS SUBSTANCE which should be handled by trained staff only.
Storage:	-20 °C
Storage Comment:	Avoid repeated freeze/thaw cycles by aliquoting items into single-use fractions for storage at -20°C for up to 2 years. Keep all reagents on ice when not in storage.

## Images



### Western Blotting

**Image 1.** PBRM1 antibody (pAb) tested by Western blot. Detection of PBRM1 by Western blot. The analysis was performed using 40 µg of A-431 nuclear extract and PBRM1 (pAb) at a 1:1000 dilution.



### ChIP DNA-Sequencing

**Image 2.** PBRM1 antibody (pAb) tested by ChIP-Seq. Chromatin immunoprecipitation (ChIP) was performed using the ChIP-IT High Sensitivity Kit with 30 µg of chromatin from mouse liver and 4 µg PBRM1 antibody. ChIP DNA was sequenced on the Illumina HiSeq and 3.9 million sequence tags were mapped to identify PBRM1 binding sites.