



[Go to Product page](#)

Datasheet for ABIN6972519

anti-PHF20 antibody

1 Image

Overview

Quantity:	100 µL
Target:	PHF20
Reactivity:	Human, Mouse
Host:	Rabbit
Clonality:	Polyclonal
Conjugate:	This PHF20 antibody is un-conjugated
Application:	Western Blotting (WB)

Product Details

Immunogen:	This PHF20 antibody was raised against a peptide derived from human PHF20.
Isotype:	IgG
Characteristics:	PHF20 (PHD finger protein 20, Glioma-expressed antigen 2, TZP) is putative transcription factor and a component of the MLL complex. PHF20 contains a PHD finger, two Tudor domains, and interacts with histone H4 methylated at lysine 20. PHF20 antibody (pAb) was raised in a Rabbit host. It has been validated for use in Western blot, it has been shown to react with Human and Mouse samples.
Purification:	Affinity Purified

Target Details

Target:	PHF20
Alternative Name:	PHF20 (PHF20 Products)

Target Details

Molecular Weight: 120 kDa

NCBI Accession: [NP_057520](#)

Application Details

Application Notes: Optimal working dilution should be determined by the investigator.

Restrictions: For Research Use only

Handling

Buffer: Purified IgG in PBS with 30 % glycerol and 0.035 % sodium azide.

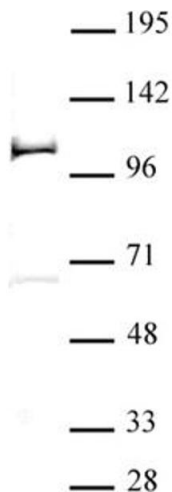
Preservative: Sodium azide

Precaution of Use: This product contains Sodium azide: a POISONOUS AND HAZARDOUS SUBSTANCE which should be handled by trained staff only.

Storage: -20 °C

Storage Comment: Avoid repeated freeze/thaw cycles by aliquoting items into single-use fractions for storage at -20°C for up to 2 years. Keep all reagents on ice when not in storage.

Images



Western Blotting

Image 1. PHF20 antibody (pAb) tested by Western blot 20 μ g nuclear extract of F9 retinoic acid -treated mouse teratocarcinoma stem cells probed with PHF20 antibody (1:500).