

Datasheet for ABIN6972521

anti-PHF6 antibody (Isoform 1, N-Term)[Go to Product page](#)**1** Image

Overview

Quantity:	100 µL
Target:	PHF6
Binding Specificity:	Isoform 1, N-Term
Reactivity:	Human
Host:	Rabbit
Clonality:	Polyclonal
Conjugate:	This PHF6 antibody is un-conjugated
Application:	Western Blotting (WB)

Product Details

Immunogen:	This antibody was generated using a peptide from the N-terminal region of human PHF6 (PHD finger protein 6 isoform 1).
Isotype:	IgG
Characteristics:	PHF6 is a member of the plant homeodomain finger (PHF) family, which has a potential role in regulation of chromatin accessibility to lineage-specific transcription factors as part of the nucleosome remodeling and deacetylase (NuRD) epigenetic complex. PHF6 has been reported as a tumor suppressor in association with hematopoietic malignancies including T-cell acute lymphoblastic leukemia (T-ALL) and acute myeloid leukemia (AML). PHF6 may have tissue-specific expression, and is overexpressed in both breast and colorectal cancers. Germline mutations in PHF6 are the cause of the Börjeson-Forssman-Lehmann X-linked intellectual disability syndrome (BFLS). PHF6 antibody (pAb) was raised in a Rabbit host. It has been validated for use in Western blot, it has been shown to react with Human samples.

Product Details

Purification: Affinity Purified

Target Details

Target: PHF6

Alternative Name: PHF6 ([PHF6 Products](#))

Molecular Weight: 45 kDa

NCBI Accession: [NP_115834](#)

Application Details

Application Notes: Optimal working dilution should be determined by the investigator.

Restrictions: For Research Use only

Handling

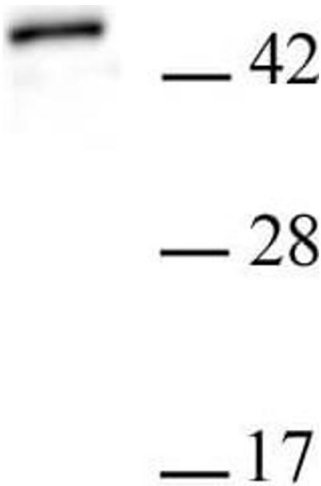
Buffer: Purified IgG in PBS with 30 % glycerol and 0.035 % sodium azide.

Preservative: Sodium azide

Precaution of Use: This product contains Sodium azide: a POISONOUS AND HAZARDOUS SUBSTANCE which should be handled by trained staff only.

Storage: -20 °C

Storage Comment: Avoid repeated freeze/thaw cycles by aliquoting items into single-use fractions for storage at -20°C for up to 2 years. Keep all reagents on ice when not in storage.



Western Blotting

Image 1. PHF6 antibody (pAb) tested by Western blot. K562 nuclear extract (20 µg) was probed with PHF6 antibody at 1:1000 dilution.