

Datasheet for ABIN6972525
**anti-Histone H2A Variant H2A.Z, Pht1 (PHT1) (C-Term)
antibody**

[Go to Product page](#)

1 Image

Overview

Quantity:	100 µL
Target:	Histone H2A Variant H2A.Z, Pht1 (PHT1)
Binding Specificity:	C-Term
Reactivity:	Schizosaccharomyces pombe
Host:	Rabbit
Clonality:	Polyclonal
Conjugate:	Un-conjugated
Application:	Western Blotting (WB)

Product Details

Immunogen:	This Pht1 / H2AZ antibody was raised against a peptide corresponding to the C-terminus of Pht1, the histone H2A variant in <i>S. pombe</i> .
Isotype:	IgG
Characteristics:	Pht1 is the <i>S. pombe</i> homolog of histone H2AZ and is involved in transcriptional regulation and chromosome architecture. It is also implicated in suppressing the accumulation of anti-sense transcripts through interaction with RNAi machinery and heterochromatin proteins. Pht1 / Histone H2A.Z antibody (pAb) (H2AZ) was raised in a Rabbit host. It has been validated for use in Western blot, it has been shown to react with Fission Yeast samples.
Purification:	Affinity Purified

Target Details

Target: Histone H2A Variant H2A.Z, Pht1 (PHT1)

Alternative Name: Pht1 / Histone H2A.Z ([PHT1 Products](#))

Molecular Weight: 15 kDa

NCBI Accession: [NP_595630](#)

Application Details

Application Notes: Optimal working dilution should be determined by the investigator.

Restrictions: For Research Use only

Handling

Buffer: Purified IgG in 70 mM Tris (pH 8), 105 mM NaCl, 31 mM glycine, 0.07 mM EDTA, 30 % glycerol and 0.035 % sodium azide.

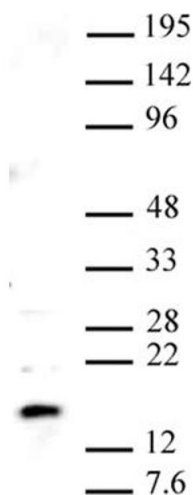
Preservative: Sodium azide

Precaution of Use: This product contains Sodium azide: a POISONOUS AND HAZARDOUS SUBSTANCE which should be handled by trained staff only.

Storage: -20 °C

Storage Comment: Avoid repeated freeze/thaw cycles by aliquoting items into single-use fractions for storage at -20°C for up to 2 years. Keep all reagents on ice when not in storage.

Images



Western Blotting

Image 1. Pht1 / H2AZ pAb tested by Western blot. *S. pombe* whole-cell extract probed with Pht1 / H2AZ pAb (1:500 dilution).