

Datasheet for ABIN6972533
anti-PITX2 antibody (N-Term)[Go to Product page](#)

1 Image

Overview

Quantity:	100 µL
Target:	PITX2
Binding Specificity:	N-Term
Reactivity:	Human
Host:	Rabbit
Clonality:	Polyclonal
Conjugate:	This PITX2 antibody is un-conjugated
Application:	Western Blotting (WB)

Product Details

Immunogen:	This PITX2 antibody was raised against a peptide within the N-terminal region of human PITX2.
Isotype:	IgG
Characteristics:	PITX2 (paired-like homeodomain transcription factor 2, ARP1, RGS, RIEG, RIEG1) controls cell proliferation in a tissue-specific manner and is involved in morphogenesis. During embryonic development, exerts a role in the expansion of muscle progenitors. May play a role in the proper localization of asymmetric organs such as the heart and stomach. PITX2 antibody (pAb) was raised in a Rabbit host. It has been validated for use in Western blot, it has been shown to react with Human samples.
Purification:	Affinity Purified

Target Details

Target:	PITX2
Alternative Name:	PITX2 (PITX2 Products)
Molecular Weight:	33 kDa
NCBI Accession:	NP_700475
Pathways:	Retinoic Acid Receptor Signaling Pathway , Regulation of Muscle Cell Differentiation , Skeletal Muscle Fiber Development

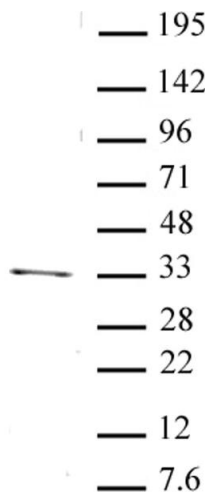
Application Details

Application Notes:	Optimal working dilution should be determined by the investigator.
Restrictions:	For Research Use only

Handling

Buffer:	Purified IgG in PBS with 30 % glycerol and 0.035 % sodium azide.
Preservative:	Sodium azide
Precaution of Use:	This product contains Sodium azide: a POISONOUS AND HAZARDOUS SUBSTANCE which should be handled by trained staff only.
Storage:	-20 °C
Storage Comment:	Avoid repeated freeze/thaw cycles by aliquoting items into single-use fractions for storage at -20°C for up to 2 years. Keep all reagents on ice when not in storage.

Images



Western Blotting

Image 1. PITX2 antibody (pAb) tested by Western blot. Whole cell extract of Saos-2 cells (20 µg) probed with PITX2 antibody (1:500).