

Datasheet for ABIN6972544  
**anti-POLR2B antibody (N-Term)**

## 2 Images

[Go to Product page](#)

## Overview

Quantity:	100 µL
Target:	POLR2B
Binding Specificity:	N-Term
Reactivity:	Human
Host:	Rabbit
Clonality:	Polyclonal
Conjugate:	This POLR2B antibody is un-conjugated
Application:	Western Blotting (WB), Immunoprecipitation (IP)

## Product Details

Immunogen:	This antibody was raised against a peptide within the N-terminal region of human POLR2B.
Isotype:	IgG
Characteristics:	<p>POLR2B (polymerase (RNA) II (DNA directed) polypeptide B, 140 kDa) DNA-dependent RNA polymerase catalyzes the transcription of DNA into RNA using the four ribonucleoside triphosphates as substrates. Second largest component of RNA polymerase II which synthesizes mRNA precursors and many functional non-coding RNAs. Proposed to contribute to the polymerase catalytic activity and forms the polymerase active center together with the largest subunit. Pol II is the central component of the basal RNA polymerase II transcription machinery. It is composed of mobile elements that move relative to each other. RPB2 is part of the core element with the central large cleft, the clamp element that moves to open and close the cleft and the jaws that are thought to grab the incoming DNA template (By similarity).</p> <p>POLR2B antibody (pAb) was raised in a Rabbit host. It has been validated for use in</p>

## Product Details

Immunoprecipitation and Western blot, it has been shown to react with Human samples.

Purification: Affinity Purified

## Target Details

Target: POLR2B

Alternative Name: POLR2B ([POLR2B Products](#))

Molecular Weight: 135 kDa

NCBI Accession: [NP\\_000929](#)

Pathways: [Regulatory RNA Pathways](#), [DNA Damage Repair](#)

## Application Details

Application Notes: Optimal working dilution should be determined by the investigator.

Restrictions: For Research Use only

## Handling

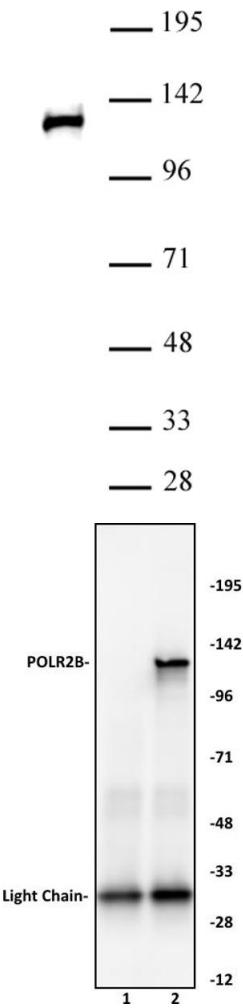
Buffer: Purified IgG in PBS with 30 % glycerol and 0.035 % sodium azide.

Preservative: Sodium azide

Precaution of Use: This product contains Sodium azide: a POISONOUS AND HAZARDOUS SUBSTANCE which should be handled by trained staff only.

Storage: -20 °C

Storage Comment: Avoid repeated freeze/thaw cycles by aliquoting items into single-use fractions for storage at -20°C for up to 2 years. Keep all reagents on ice when not in storage.



### Western Blotting

**Image 1.** POLR2B antibody (pAb) tested by Western blot. Nuclear extract of HEK293 cells (30 µg) probed with POLR2B antibody (pAb) at a dilution of 1:1,500.

### Immunoprecipitation

**Image 2.** POLR2B antibody (pAb) tested by Immunoprecipitation. 10 µL of POLR2B antibody was used to immunoprecipitate POLR2B from 200 µg of HEK293 nuclear cell extract (lane 2). 10 µL of rabbit IgG was used as a negative control (lane 1). The immunoprecipitated protein was detected by Western blotting using the POLR2B antibody at a dilution of 1:500.