

Datasheet for ABIN6972548
anti-PPM1D antibody (C-Term)[Go to Product page](#)

1 Image

Overview

Quantity:	100 µL
Target:	PPM1D
Binding Specificity:	C-Term
Reactivity:	Human
Host:	Rabbit
Clonality:	Polyclonal
Conjugate:	This PPM1D antibody is un-conjugated
Application:	Western Blotting (WB)

Product Details

Immunogen:	This antibody was raised against a peptide within the C-terminal region of human PPM1D.
Isotype:	IgG
Characteristics:	PPM1D (protein phosphatase 1D) is required for the relief of p53-dependent checkpoint mediated cell cycle arrest. Binds to and dephosphorylates 'Ser-15' of TP53 and 'Ser-345' of CHEK1 which contributes to the functional inactivation of these proteins. PPM1D antibody (pAb) was raised in a Rabbit host. It has been validated for use in Western blot, it has been shown to react with Human samples.
Purification:	Affinity Purified

Target Details

Target:	PPM1D
---------	-------

Target Details

Alternative Name:	PPM1D (PPM1D Products)
Molecular Weight:	70 kDa
NCBI Accession:	NP_003611
Pathways:	p53 Signaling , Cell Division Cycle

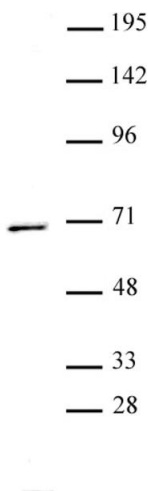
Application Details

Application Notes:	Optimal working dilution should be determined by the investigator.
Restrictions:	For Research Use only

Handling

Buffer:	Purified IgG in PBS with 30 % glycerol and 0.035 % sodium azide.
Preservative:	Sodium azide
Precaution of Use:	This product contains Sodium azide: a POISONOUS AND HAZARDOUS SUBSTANCE which should be handled by trained staff only.
Storage:	-20 °C
Storage Comment:	Avoid repeated freeze/thaw cycles by aliquoting items into single-use fractions for storage at -20°C for up to 2 years. Keep all reagents on ice when not in storage.

Images



Western Blotting

Image 1. PPM1D antibody (pAb) tested by Western blot. T-47D nuclear extract (40 µg) probed with PPM1D antibody at a dilution of 1:500.