

Datasheet for ABIN6972556  
**anti-PRMT6 antibody (N-Term)**[Go to Product page](#)

## 1 Image

## Overview

Quantity:	100 µL
Target:	PRMT6
Binding Specificity:	N-Term
Reactivity:	Human
Host:	Rabbit
Clonality:	Polyclonal
Conjugate:	This PRMT6 antibody is un-conjugated
Application:	Western Blotting (WB), Immunohistochemistry (IHC)

## Product Details

Immunogen:	This PRMT6 antibody was raised against a peptide corresponding to amino acids within the N-terminal region of PRMT6.
Isotype:	IgG
Characteristics:	PRMT6 (Protein Arginine Methyltransferase 6, HRMT1L6, ANM6) is a type I arginine methyltransferase. Arginine methylation is a common post-translational modification of histones and other cellular proteins. PRMT6 preferentially methylates arginine residues present in GAR (glycine and arginine-rich) domains. PRMT6 asymmetrically dimethylates histone H3 at Arg2, which is mutually exclusive to methylation at lysine 4 (associated with transcriptional activation), and thus PRMT6 serves as a transcriptional repressor in this context. It can also symmetrically dimethylate H2A and H4 at Arg3 and serves as a coactivator of transcription in concert with nuclear receptors. PRMT6 antibody (pAb) was raised in a Rabbit host. It has been validated for use in Immunohistochemistry and Western blot, it has been shown to react with

## Product Details

Human samples.

Purification: Affinity Purified

## Target Details

Target: PRMT6

Alternative Name: PRMT6 ([PRMT6 Products](#))

Molecular Weight: 42 kDa

NCBI Accession: [NP\\_060607](#)

## Application Details

Application Notes: Optimal working dilution should be determined by the investigator.

Restrictions: For Research Use only

## Handling

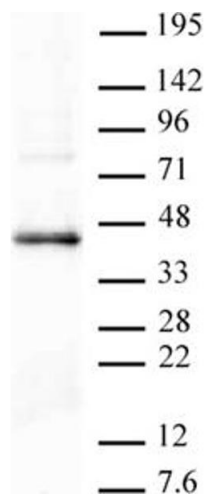
Buffer: Purified IgG in 70 mM Tris ( pH 8), 105 mM NaCl, 31 mM glycine, 0.07 mM EDTA, 30 % glycerol and 0.035 % sodium azide.

Preservative: Sodium azide

Precaution of Use: This product contains Sodium azide: a POISONOUS AND HAZARDOUS SUBSTANCE which should be handled by trained staff only.

Storage: -20 °C

Storage Comment: Avoid repeated freeze/thaw cycles by aliquoting items into single-use fractions for storage at -20°C for up to 2 years. Keep all reagents on ice when not in storage.



Western Blotting

**Image 1.** Western blot of PRMT6 antibody. Nuclear extract of HeLa cells (20 µg) probed with PRMT6 antibody (1:500).