

Datasheet for ABIN6972591
anti-RBBP5 antibody (C-Term)

2 Images

[Go to Product page](#)

Overview

Quantity:	100 µL
Target:	RBBP5
Binding Specificity:	C-Term
Reactivity:	Human
Host:	Rabbit
Clonality:	Polyclonal
Conjugate:	This RBBP5 antibody is un-conjugated
Application:	Western Blotting (WB), Chromatin Immunoprecipitation (ChIP), ChIP DNA-Sequencing (ChIP-seq)

Product Details

Immunogen:	This antibody was raised against a peptide within the C-terminal region of human RBBP5.
Isotype:	IgG
Characteristics:	As part of the MLL1/MLL complex, RBBP5 (retinoblastoma binding protein 5) is involved in methylation and dimethylation at 'Lys-4' of histone H3. H3 'Lys-4' methylation represents a specific tag for epigenetic transcriptional activation. RBBP5 antibody (pAb) was raised in a Rabbit host. It has been validated for use in Chromatin Immunoprecipitation, ChIP-Seq and Western blot, it has been shown to react with Human samples.
Purification:	Affinity Purified

Target Details

Target:	RBBP5
Alternative Name:	RBBP5 (RBBP5 Products)
Molecular Weight:	70 kDa
NCBI Accession:	NP_005048

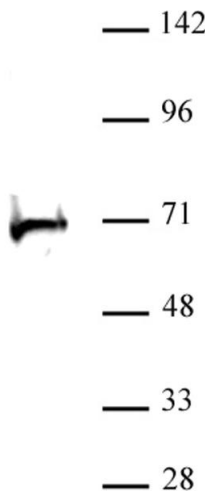
Application Details

Application Notes:	Optimal working dilution should be determined by the investigator.
Restrictions:	For Research Use only

Handling

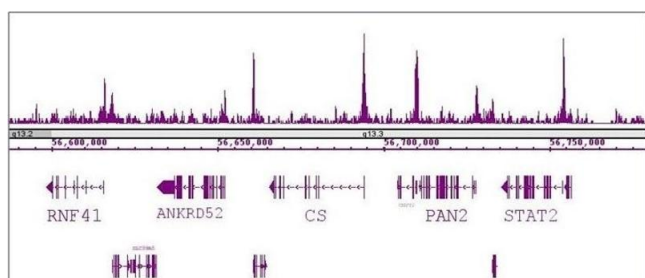
Buffer:	Purified IgG in PBS with 30 % glycerol and 0.035 % sodium azide.
Preservative:	Sodium azide
Precaution of Use:	This product contains Sodium azide: a POISONOUS AND HAZARDOUS SUBSTANCE which should be handled by trained staff only.
Storage:	-20 °C
Storage Comment:	Avoid repeated freeze/thaw cycles by aliquoting items into single-use fractions for storage at -20°C for up to 2 years. Keep all reagents on ice when not in storage.

Images



Western Blotting

Image 1. RBBP5 antibody (pAb) tested by Western blot. MCF-7 whole-cell extract (20 µg) probed with RBBP5 antibody at a dilution of 1:1,000.



ChIP DNA-Sequencing

Image 2. RBBP5 antibody (pAb) tested by ChIP-Seq. ChIP was performed using the ChIP-IT High Sensitivity Kit with 30 µg of human PBMC chromatin and 7 µL of antibody. ChIP DNA was sequenced on the Illumina HiSeq and 21 million sequence tags were mapped to identify RBBP5 binding sites. The image shows binding across a region of chromosome 12. You can view the complete data set in the UCSC Genome Browser, starting at this specific location, [here](#).