

Datasheet for ABIN6972612

**anti-POLR2F antibody****3** Images[Go to Product page](#)

## Overview

Quantity:	100 µg
Target:	POLR2F
Reactivity:	Human
Host:	Rat
Clonality:	Monoclonal
Conjugate:	This POLR2F antibody is un-conjugated
Application:	Western Blotting (WB), Immunofluorescence (IF), Chromatin Immunoprecipitation (ChIP), ChIP DNA-Sequencing (ChIP-seq), Immunocytochemistry (ICC)

## Product Details

Immunogen:	This antibody was raised against a synthetic peptide containing the CTD of human RNA Polymerase II.
Clone:	1F4B6
Isotype:	IgG2a
Characteristics:	<p>RNA pol II (RNA polymerase II) is responsible for synthesizing messenger RNA in eukaryotes. RNA pol II contains a carboxy terminal domain composed of heptapeptide repeats that are essential for polymerase activity. These repeats contain serine and threonine residues that are phosphorylated in actively transcribing RNA polymerase. In addition, RNA pol II, in combination with several other polymerase subunits, form the DNA binding domain of the polymerase, a groove in which the DNA template is transcribed into RNA. RNA pol II antibody (mAb) (Clone 1F4B6) was raised in a Rat host. It has been validated for use in Chromatin Immunoprecipitation, ChIP-Seq, Immunocytochemistry, Immunofluorescence and Western blot,</p>

## Product Details

it has been shown to react with Human samples.

Purification: Protein G Chromatography

## Target Details

Target: POLR2F

Alternative Name: RNA pol II ([POLR2F Products](#))

Molecular Weight: 240 kDa

NCBI Accession: [NP\\_000928](#)

Pathways: [Regulatory RNA Pathways](#)

## Application Details

Application Notes: Optimal working dilution should be determined by the investigator.

Restrictions: For Research Use only

## Handling

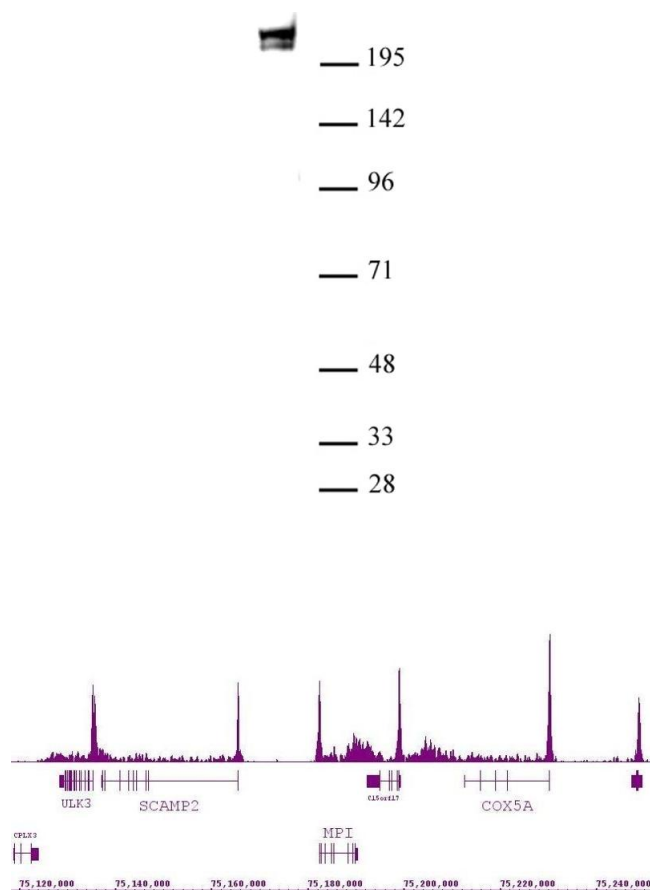
Buffer: Purified IgG in PBS with 30 % glycerol and 0.035 % sodium azide.

Preservative: Sodium azide

Precaution of Use: This product contains Sodium azide: a POISONOUS AND HAZARDOUS SUBSTANCE which should be handled by trained staff only.

Storage: -20 °C

Storage Comment: Avoid repeated freeze/thaw cycles by aliquoting items into single-use fractions for storage at -20°C for up to 2 years. Keep all reagents on ice when not in storage.



### Western Blotting

**Image 1.** RNA pol II antibody (mAb) (Clone 1F4B6) tested by Western blot. HeLa nuclear extract (30  $\mu$ g per lane) probed with RNA pol II antibody (mAb) at a 1  $\mu$ g/mL dilution.

### ChIP DNA-Sequencing

**Image 2.** RNA pol II antibody (mAb) (Clone 1F4B6) tested by ChIP-Seq. ChIP was performed using the ChIP-IT High Sensitivity Kit with 30  $\mu$ g of chromatin from HL-60 cells and 4  $\mu$ g of antibody. ChIP DNA was sequenced on the Illumina HiSeq and 14 million sequence tags were mapped to identify RNA pol II binding sites. The image shows binding across a region of chromosome 15. You can view the complete data set in the UCSC Genome Browser, starting at this specific location, [here](#).

### Immunofluorescence

**Image 3.** RNA pol II antibody (mAb) (Clone 1F4B6) tested by immunofluorescence. Left: HeLa cell stained with RNA pol II antibody (mAb). Middle: Hoechst. Right: Merge.

