



## Datasheet for ABIN6972695 **anti-SATB1 antibody (N-Term)**



[Go to Product page](#)

### 1 Image

#### Overview

Quantity:	100 µL
Target:	SATB1
Binding Specificity:	N-Term
Reactivity:	Human, Mouse
Host:	Rabbit
Clonality:	Polyclonal
Conjugate:	This SATB1 antibody is un-conjugated
Application:	Western Blotting (WB)

#### Product Details

Immunogen:	This SATB1 antibody was raised against a peptide within the N-terminal region of SATB1.
Isotype:	IgG
Characteristics:	<p>SATB1 (Special AT-rich sequence-binding protein 1) is a chromosome-associated protein that binds to matrix attachment regions (MARs) of DNA at special AT-rich sequences and induces local chromatin-loop remodeling. SATB1 functions as both a chromatin organizer and transcription factor. It regulates gene expression and higher-order chromatin structure of multigene clusters. SATB1 acts as a docking site for several chromatin remodeling enzymes and recruits corepressors (HDACs) or coactivators (HATs) directly to promoters and enhancers. It is required for the switching of fetal globin genes, plays a role in chromatin organization and nuclear architecture during apoptosis. It is a crucial factor contributing to the initiation of X inactivation mediated by Xist RNA that occurs during embryogenesis. SATB1 contributes to metastatic potential in breast cancer cells, directly upregulating metastasis-associated genes</p>

## Product Details

---

while downregulating tumor-suppressor genes. It is also required for the differentiation of embryonic stem cells through repression of ES pluripotency factors Nanog, Klf4, and Tbx3. SATB1 antibody (pAb) was raised in a Rabbit host. It has been validated for use in Western blot, it has been shown to react with Human and Mouse samples.

Purification: Affinity Purified

## Target Details

---

Target: SATB1

Alternative Name: SATB1 ([SATB1 Products](#))

Molecular Weight: 105 kDa

NCBI Accession: [NP\\_001124482](#)

Pathways: [Caspase Cascade in Apoptosis, Activated T Cell Proliferation](#)

## Application Details

---

Application Notes: Optimal working dilution should be determined by the investigator.

Restrictions: For Research Use only

## Handling

---

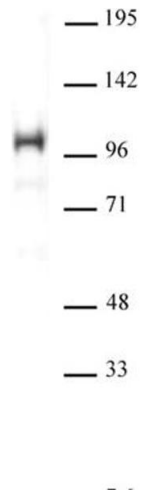
Buffer: Purified IgG in 70 mM Tris ( pH 8), 105 mM NaCl, 31 mM glycine, 0.07 mM EDTA, 30 % glycerol and 0.035 % sodium azide.

Preservative: Sodium azide

Precaution of Use: This product contains Sodium azide: a POISONOUS AND HAZARDOUS SUBSTANCE which should be handled by trained staff only.

Storage: -20 °C

Storage Comment: Avoid repeated freeze/thaw cycles by aliquoting items into single-use fractions for storage at -20°C for up to 2 years. Keep all reagents on ice when not in storage.



### Western Blotting

**Image 1.** SATB1 antibody (pAb) tested by Western blot. Whole cell extract of mouse thymus cells (30 µg per lane) probed with SATB1 antibody (pAb) (1:2,000 dilution).