

Datasheet for ABIN6972697
anti-SATB2 antibody (C-Term)[Go to Product page](#)

1 Image

Overview

Quantity:	100 µL
Target:	SATB2
Binding Specificity:	C-Term
Reactivity:	Human
Host:	Rabbit
Clonality:	Polyclonal
Conjugate:	This SATB2 antibody is un-conjugated
Application:	Western Blotting (WB)

Product Details

Immunogen:	This antibody was raised against a peptide within the C-terminal region of human SATB2.
Isotype:	IgG
Characteristics:	<p>SATB2 (SATB homeobox 2, Special AT-Rich Sequence-Binding Protein 2) binds to DNA, at nuclear matrix- or scaffold-associated regions. Thought to recognize the sugar-phosphate structure of double-stranded DNA. Transcription factor controlling nuclear gene expression, by binding to matrix attachment regions (MARs) of DNA and inducing a local chromatin-loop remodeling. Acts as a docking site for several chromatin remodeling enzymes and also by recruiting corepressors (HDACs) or coactivators (HATs) directly to promoters and enhancers. Required for the initiation of the upper-layer neurons (UL1) specific genetic program and for the inactivation of deep-layer neurons (DL) and UL2 specific genes, probably by modulating BCL11B expression. Repressor of Ctip2 and regulatory determinant of corticocortical connections in the developing cerebral cortex. May play an important role in palate formation.</p>

Product Details

Acts as a molecular node in a transcriptional network regulating skeletal development and osteoblast differentiation. SATB2 antibody (pAb) was raised in a Rabbit host. It has been validated for use in Western blot, it has been shown to react with Human samples.

Purification: Affinity Purified

Target Details

Target: SATB2

Alternative Name: SATB2 ([SATB2 Products](#))

Molecular Weight: 90 kDa

NCBI Accession: [NP_056080](#)

Application Details

Application Notes: Optimal working dilution should be determined by the investigator.

Restrictions: For Research Use only

Handling

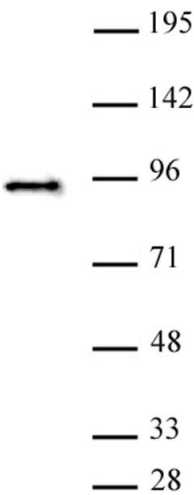
Buffer: Purified IgG in PBS with 30 % glycerol and 0.035 % sodium azide.

Preservative: Sodium azide

Precaution of Use: This product contains Sodium azide: a POISONOUS AND HAZARDOUS SUBSTANCE which should be handled by trained staff only.

Storage: -20 °C

Storage Comment: Avoid repeated freeze/thaw cycles by aliquoting items into single-use fractions for storage at -20°C for up to 2 years. Keep all reagents on ice when not in storage.



Western Blotting

Image 1. SATB2 antibody (pAb) tested by Western blot. SATB2 antibody detection by Western blot. The analysis was performed using 20 µg Saos-2 nuclear extract and SATB2 antibody at a 1:500 dilution.