

Datasheet for ABIN6972701  
**anti-SETD7 antibody**



[Go to Product page](#)

1 Image

## Overview

Quantity:	100 µL
Target:	SETD7
Reactivity:	Human
Host:	Rabbit
Clonality:	Polyclonal
Conjugate:	This SETD7 antibody is un-conjugated
Application:	Western Blotting (WB)

## Product Details

Immunogen:	This antibody was raised against a peptide within human SETD7 / SET7.
Isotype:	IgG
Characteristics:	<p>SETD7 / SET7 (SET Domain Containing (Lysine Methyltransferase) 7) is a histone methyltransferase that specifically monomethylates 'Lys-4' of histone H3. H3 'Lys-4' methylation represents a specific tag for epigenetic transcriptional activation. Plays a central role in the transcriptional activation of genes such as collagenase or insulin. Recruited by IPF1/PDX-1 to the insulin promoter, leading to activate transcription. Has also methyltransferase activity toward non-histone proteins such as p53/TP53, TAF10, and possibly TAF7 by recognizing and binding the [KR]-[STA]-K in substrate proteins. Monomethylates 'Lys-189' of TAF10, leading to increase the affinity of TAF10 for RNA polymerase II. Monomethylates 'Lys-372' of p53/TP53, stabilizing p53/TP53 and increasing p53/TP53-mediated transcriptional activation. SETD7 / SET7 antibody (pAb) was raised in a Rabbit host. It has been validated for use in Western blot, it has been shown to react with Human samples.</p>

## Product Details

---

Purification: Affinity Purified

## Target Details

---

Target: SETD7

Alternative Name: SETD7 / SET7 ([SETD7 Products](#))

Molecular Weight: 60 kDa

NCBI Accession: [NP\\_085151](#)

## Application Details

---

Application Notes: Optimal working dilution should be determined by the investigator.

Restrictions: For Research Use only

## Handling

---

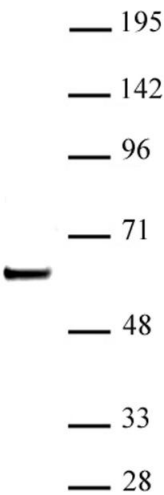
Buffer: Purified IgG in PBS with 30 % glycerol and 0.035 % sodium azide.

Preservative: Sodium azide

Precaution of Use: This product contains Sodium azide: a POISONOUS AND HAZARDOUS SUBSTANCE which should be handled by trained staff only.

Storage: -20 °C

Storage Comment: Avoid repeated freeze/thaw cycles by aliquoting items into single-use fractions for storage at -20°C for up to 2 years. Keep all reagents on ice when not in storage.



Western Blotting

**Image 1.** SETD7 / SET7 (pAb) tested by Western blot. Detection of SETD7 / SET7 by Western blot analysis. Nuclear extract of MCF-7 cells (20 µg) was probed with SETD7 / SET7 (pAb) at a 1:500 dilution.