

Datasheet for ABIN6972709
anti-SIP1 antibody (N-Term)



[Go to Product page](#)

1 Image

Overview

Quantity:	100 µL
Target:	SIP1 (GEMIN2)
Binding Specificity:	N-Term
Reactivity:	Human
Host:	Rabbit
Clonality:	Polyclonal
Conjugate:	This SIP1 antibody is un-conjugated
Application:	Western Blotting (WB)

Product Details

Immunogen:	This SIP1 antibody was raised against a peptide from the N-terminus of human SIP1.
Isotype:	IgG
Characteristics:	<p>SIP1 (Smad-interacting protein 1, aka ZEB2, Zinc finger E-box-binding homeobox 2) is a sequence-specific DNA binding protein and transcriptional repressor that is involved in normal embryonic development of neural structures and the neural crest. SIP1 belongs to the delta-EF1/Zfh1 family of 2-handed zinc finger/homeodomain proteins and contains a SMAD-binding domain, a homeodomain and two clusters of zinc fingers on the N- and C-termini. SIP1 interacts directly with activated forms of SMAD1, SMAD2 and SMAD3, as well as CBX4 and CTBP1. Mutations in the SIP1 gene cause a form of Hirschsprung disease (HSCR). SIP1 antibody (pAb) was raised in a Rabbit host. It has been validated for use in Western blot, it has been shown to react with Human samples.</p>

Product Details

Purification: Affinity Purified

Target Details

Target: SIP1 (GEMIN2)

Alternative Name: SIP1 ([GEMIN2 Products](#))

Molecular Weight: 180 kDa

NCBI Accession: [NP_055610](#)

Pathways: [Ribonucleoprotein Complex Subunit Organization, Tube Formation](#)

Application Details

Application Notes: Optimal working dilution should be determined by the investigator.

Restrictions: For Research Use only

Handling

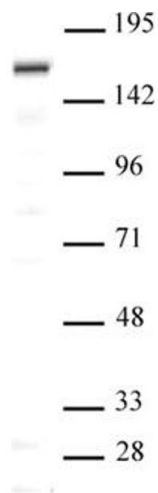
Buffer: Purified IgG in PBS with 30 % glycerol and 0.035 % sodium azide.

Preservative: Sodium azide

Precaution of Use: This product contains Sodium azide: a POISONOUS AND HAZARDOUS SUBSTANCE which should be handled by trained staff only.

Storage: -20 °C

Storage Comment: Avoid repeated freeze/thaw cycles by aliquoting items into single-use fractions for storage at -20°C for up to 2 years. Keep all reagents on ice when not in storage.



Western Blotting

Image 1. SIP1 antibody (pAb) tested by Western blot Nuclear extract of Saos-2 cells (20 µg per lane) probed with SIP1 antibody (pAb) at a dilution of 1:500.