



[Go to Product page](#)

Datasheet for ABIN6972723
anti-SIRT6 antibody (C-Term)

2 Images

Overview

Quantity:	100 µL
Target:	SIRT6
Binding Specificity:	C-Term
Reactivity:	Human
Host:	Rabbit
Clonality:	Polyclonal
Application:	Western Blotting (WB), Immunoprecipitation (IP)

Product Details

Immunogen:	This SIRT6 antibody was raised against a peptide within the C-terminus of human SIRT6.
Isotype:	IgG
Characteristics:	SIRT6 (Sir2 homologue 6) is an NAD ⁺ dependant histone deacetylase (HDAC) related to SIRT1 and to the yeast Sir2 protein. SIRT6, originally identified as a tubulin deacetylase, it was recently found to be able to deacetylate histone H3 acetylated at lysine 9. SIRT6 antibody (pAb) was raised in a Rabbit host. It has been validated for use in Immunoprecipitation and Western blot, it has been shown to react with Human samples.
Purification:	Affinity Purified

Target Details

Target:	SIRT6
Alternative Name:	SIRT6 (SIRT6 Products)

Target Details

Molecular Weight: 46 kDa

NCBI Accession: [NP_057623](#)

Application Details

Application Notes: Optimal working dilution should be determined by the investigator.

Restrictions: For Research Use only

Handling

Buffer: Purified IgG in 70 mM Tris (pH 8), 105 mM NaCl, 31 mM glycine, 0.07 mM EDTA, 30 % glycerol and 0.035 % sodium azide.

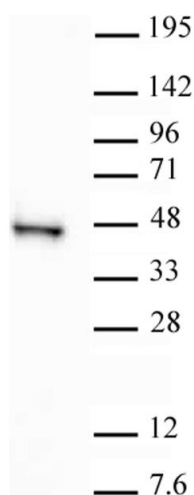
Preservative: Sodium azide

Precaution of Use: This product contains Sodium azide: a POISONOUS AND HAZARDOUS SUBSTANCE which should be handled by trained staff only.

Storage: -20 °C

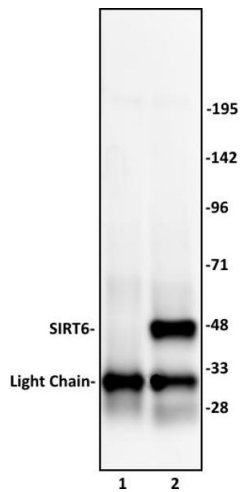
Storage Comment: Avoid repeated freeze/thaw cycles by aliquoting items into single-use fractions for storage at -20°C for up to 2 years. Keep all reagents on ice when not in storage.

Images



Western Blotting

Image 1. SIRT6 antibody (pAb) tested by Western blot. HeLa cells nuclear extract (25 µg) probed with SIRT6 antibody (1:1,000).



Immunoprecipitation

Image 2. SIRT6 antibody (pAb) tested by Immunoprecipitation. 10 μ L of SIRT6 antibody was used to immunoprecipitate SIRT6 from 500 μ g of HeLa nuclear cell extract (lane 2). 10 μ L of rabbit IgG was used as a negative control (lane 1). The immunoprecipitated protein was detected by Western blotting using the SIRT6 antibody at a dilution of 1:1,000.