

Datasheet for ABIN6972745
anti-SMARCC1 antibody (N-Term)[Go to Product page](#)

2 Images

Overview

Quantity:	100 µL
Target:	SMARCC1
Binding Specificity:	N-Term
Reactivity:	Human
Host:	Rabbit
Clonality:	Polyclonal
Conjugate:	This SMARCC1 antibody is un-conjugated
Application:	Western Blotting (WB), Immunofluorescence (IF), Immunocytochemistry (ICC)

Product Details

Immunogen:	This antibody was raised against a peptide within the N-terminal region of human SMARCC1 / BAF155.
Isotype:	IgG
Characteristics:	SMARCC1 / BAF155 (SWI/SNF related, matrix associated, actin dependent regulator of chromatin, subfamily c, member 1 / BRG1-associated factor 155) is involved in transcriptional activation and repression of select genes by chromatin remodeling. Component of multiple SWI/SNF chromatin remodeling complexes including Swi/Snf-A (BAF), Swi/Snf-B (PBAF), Brm, Brg1(I), WINAC, Brg1(II), npBAF and nBAF. SMARCC1 / BAF155 antibody (pAb) was raised in a Rabbit host. It has been validated for use in Immunocytochemistry, Immunofluorescence and Western blot, it has been shown to react with Human samples.
Purification:	Affinity Purified

Target Details

Target:	SMARCC1
Alternative Name:	SMARCC1 / BAF155 (SMARCC1 Products)
Molecular Weight:	155 kDa
NCBI Accession:	NP_003065
Pathways:	Chromatin Binding

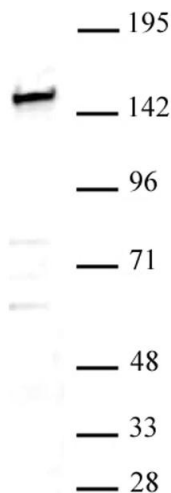
Application Details

Application Notes:	Optimal working dilution should be determined by the investigator.
Restrictions:	For Research Use only

Handling

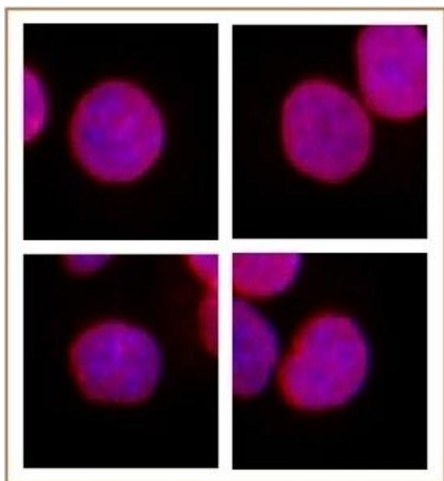
Buffer:	Purified IgG in PBS with 30 % glycerol and 0.035 % sodium azide.
Preservative:	Sodium azide
Precaution of Use:	This product contains Sodium azide: a POISONOUS AND HAZARDOUS SUBSTANCE which should be handled by trained staff only.
Storage:	-20 °C
Storage Comment:	Avoid repeated freeze/thaw cycles by aliquoting items into single-use fractions for storage at -20°C for up to 2 years. Keep all reagents on ice when not in storage.

Images



Western Blotting

Image 1. SMARCC1 / BAF155 antibody (pAb) tested by Western blot. K-562 nuclear extract (30 µg) probed with SMARCC1 / BAF155 antibody at a dilution of 1:500.



Immunofluorescence

Image 2. SMARCC1 / BAF155 antibody (pAb) tested by Immunofluorescence. Formaldehyde fixed HeLa cells stained with SMARCC1 / BAF155 antibody at a 1:2,000 dilution.