

Datasheet for ABIN6972758  
**anti-SMC4 antibody (N-Term)**[Go to Product page](#)

## 2 Images

## Overview

Quantity:	100 µL
Target:	SMC4
Binding Specificity:	N-Term
Reactivity:	Human
Host:	Rabbit
Clonality:	Polyclonal
Conjugate:	This SMC4 antibody is un-conjugated
Application:	Western Blotting (WB), Immunoprecipitation (IP)

## Product Details

Immunogen:	This SMC4 antibody was raised against a peptide from the N-terminus of human SMC4.
Isotype:	IgG
Characteristics:	<p>The Structural Maintenance of Chromosomes (SMC) family proteins play critical roles in various nuclear events that require structural changes of chromosomes, including mitotic chromosome organization, DNA recombination and repair and global transcriptional repression. SMC4 is the central component of the condensin complex, a complex required for conversion of interphase chromatin into condensed mitotic chromosomes. SMC4 forms a heterodimer with SMC2 and contains a myosin-like ATPase domain that serves as a molecular motor to help organize chromatin. During mitosis, most of the condensin complex is associated with the chromatin. SMC4 antibody (pAb) was raised in a Rabbit host. It has been validated for use in Immunoprecipitation and Western blot, it has been shown to react with Human samples.</p>

## Product Details

---

Purification: Affinity Purified

## Target Details

---

Target: SMC4

Alternative Name: SMC4 ([SMC4 Products](#))

Molecular Weight: 175 kDa

NCBI Accession: [NP\\_001002800](#)

## Application Details

---

Application Notes: Optimal working dilution should be determined by the investigator.

Restrictions: For Research Use only

## Handling

---

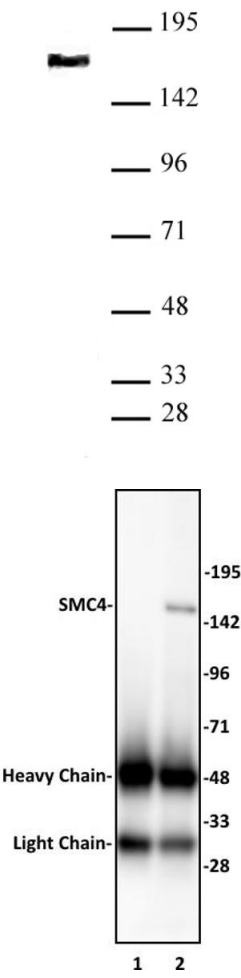
Buffer: Purified IgG in PBS with 30 % glycerol and 0.035 % sodium azide.

Preservative: Sodium azide

Precaution of Use: This product contains Sodium azide: a POISONOUS AND HAZARDOUS SUBSTANCE which should be handled by trained staff only.

Storage: -20 °C

Storage Comment: Avoid repeated freeze/thaw cycles by aliquoting items into single-use fractions for storage at -20°C for up to 2 years. Keep all reagents on ice when not in storage.



Western Blotting

**Image 1.** SMC4 antibody (pAb) tested by Western blot. Nuclear extract of HeLa cells (20 µg) probed with SMC4 antibody (1:1,000).

Immunoprecipitation

**Image 2.** SMC4 antibody (pAb) tested by Immunoprecipitation. 10 µL of SMC4 antibody was used to immunoprecipitate SMC4 from 500 µg of HeLa nuclear cell extract (lane 2). 10 µL of rabbit IgG was used as a negative control (lane 1). The immunoprecipitated protein was detected by Western blotting using the SMC4 antibody at a dilution of 1:1,000.