

Datasheet for ABIN6972814
anti-STAT5A antibody (C-Term)



[Go to Product page](#)

2 Images

Overview

Quantity:	100 µg
Target:	STAT5A
Binding Specificity:	C-Term
Reactivity:	Human
Host:	Rabbit
Clonality:	Polyclonal
Application:	Western Blotting (WB), Immunoprecipitation (IP)

Product Details

Immunogen:	This STAT5A antibody was raised against a peptide in the C-terminal region of human STAT5A.
Isotype:	IgG
Characteristics:	STAT5A and STAT5B are encoded by separate genes but are 90 % identical. They mediate gene expression in response to IL-2, IL-3, IL-7 GM-CSF, erythropoietin, thrombopoietin, and different growth hormones. The STAT5A/B signaling pathway is involved in the transition of organ-confined prostate cancer to hormone-refractory disease. This implies that the active JAK2-STAT5A/B signaling pathway potentially provides the means for pharmacological intervention of clinical prostate cancer progression. STAT5A antibody (pAb) was raised in a Rabbit host. It has been validated for use in Immunoprecipitation and Western blot, it has been shown to react with Human samples.
Purification:	Affinity Purified

Target Details

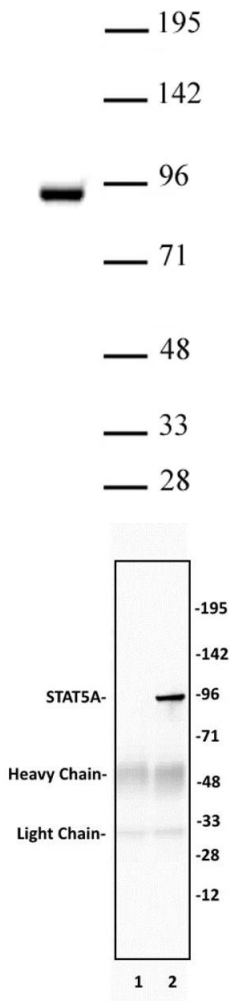
Target:	STAT5A
Alternative Name:	STAT5A (STAT5A Products)
Molecular Weight:	92 kDa
NCBI Accession:	NP_003143
Pathways:	JAK-STAT Signaling , RTK Signaling , Response to Growth Hormone Stimulus , C21-Steroid Hormone Metabolic Process , Regulation of Leukocyte Mediated Immunity , Positive Regulation of Immune Effector Process , CXCR4-mediated Signaling Events , Activated T Cell Proliferation

Application Details

Application Notes:	Optimal working dilution should be determined by the investigator.
Restrictions:	For Research Use only

Handling

Buffer:	Purified IgG in PBS with 30 % glycerol and 0.035 % sodium azide.
Preservative:	Sodium azide
Precaution of Use:	This product contains Sodium azide: a POISONOUS AND HAZARDOUS SUBSTANCE which should be handled by trained staff only.
Storage:	-20 °C
Storage Comment:	Avoid repeated freeze/thaw cycles by aliquoting items into single-use fractions for storage at -20°C for up to 2 years. Keep all reagents on ice when not in storage.



Western Blotting

Image 1. STAT5A antibody (pAb) tested by Western blot. STAT5A antibody detection by Western blot. The analysis was performed using K-562 cytosolic-cell extract (25 µg) and STAT5A antibody (pAb) at a 1 µg/mL dilution.

Immunoprecipitation

Image 2. STAT5A antibody (pAb) tested by Immunoprecipitation. 10 µg of STAT5A antibody was used to immunoprecipitate STAT5A from 400 µg of K562 cytosolic cell extract (lane 2). 10 µL of rabbit IgG was used as a negative control (lane 1). The immunoprecipitated protein was detected by Western blotting using the STAT5A antibody at a dilution of 1 µg/mL.