



[Go to Product page](#)

Datasheet for ABIN6972836
anti-SUZ12 antibody (C-Term)

3 Images

Overview

Quantity:	100 µL
Target:	SUZ12
Binding Specificity:	C-Term
Reactivity:	Human, Mouse
Host:	Rabbit
Clonality:	Polyclonal
Conjugate:	This SUZ12 antibody is un-conjugated
Application:	Western Blotting (WB), Immunofluorescence (IF), Chromatin Immunoprecipitation (ChIP), ChIP DNA-Sequencing (ChIP-seq)

Product Details

Immunogen:	This Suz12 antibody was raised against a peptide corresponding to the C-terminus of human Suz12.
Isotype:	IgG
Characteristics:	Suz12 (Suppressor-of-Zeste 12 protein, also designated as ChET9, JJAZ1 protein) is a component of the Polycomb group complexes 2, 3 and 4 (PRC2, PRC3 and PRC4), which also contain the histone methyltransferase EZH2, EED (Embryonic Ectoderm Development protein) protein and the histone-binding proteins RbAP46 and RbAP48. PRC2 is responsible for di- and trimethylation of histone 3 at lysine 27 (Histone H3K27me2 and Histone H3K27me3), which leads to transcriptional repression of the target genes. Suz12 is a nuclear protein belonging to the VEFS family. Suz12 contains a zinc-finger binding motif and a VEFS box, which is required for the interaction between Suz12 and EZH2. Suz12 antibody (pAb) was raised in a Rabbit host.

Product Details

It has been validated for use in Chromatin Immunoprecipitation, ChIP-Seq, Immunofluorescence and Western blot, it has been shown to react with Human and Mouse samples.

Purification: Affinity Purified

Target Details

Target: SUZ12

Alternative Name: Suz12 ([SUZ12 Products](#))

Molecular Weight: 95 kDa

NCBI Accession: [NP_056170](#)

Application Details

Application Notes: Optimal working dilution should be determined by the investigator.

Restrictions: For Research Use only

Handling

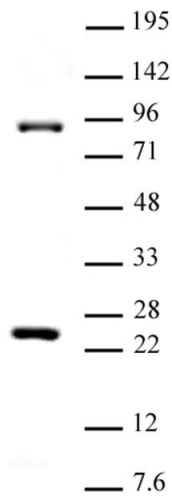
Buffer: PBS, 30 % glycerol, 0.035 % sodium azide.

Preservative: Sodium azide

Precaution of Use: This product contains Sodium azide: a POISONOUS AND HAZARDOUS SUBSTANCE which should be handled by trained staff only.

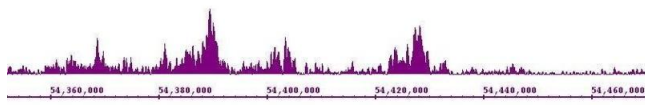
Storage: -20 °C

Storage Comment: Avoid repeated freeze/thaw cycles by aliquoting items into single-use fractions for storage at -20°C for up to 2 years. Keep all reagents on ice when not in storage.



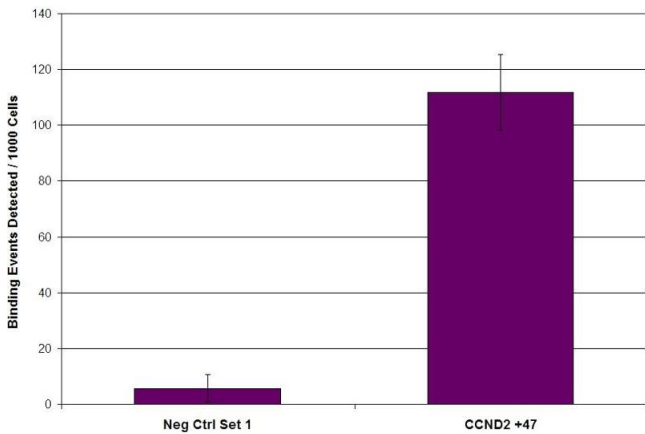
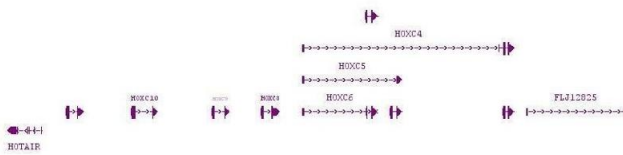
Western Blotting

Image 1. Suz12 antibody (pAb) tested by Western blot. HeLa cell nuclear extract (20 µg) was probed with Suz12 pAb (1:500 dilution).



ChIP DNA-Sequencing

Image 2. Suz12 antibody (pAb) tested by ChIP-Seq. ChIP was performed using the ChIP-IT High Sensitivity Kit with 30 µg of chromatin from a human B cell lymphoma cell line and 10 µL of antibody. ChIP DNA was sequenced on the Illumina HiSeq and 15 million sequence tags were mapped to identify Suz12 binding sites. The image shows binding across a region of chromosome 12.



Chromatin Immunoprecipitation

Image 3. Suz12 antibody (pAb) tested by ChIP. Chromatin immunoprecipitation (ChIP) was performed using the ChIP-IT High Sensitivity Kit with 30 µg of chromatin from human non-small cell lung carcinoma cell line NCI-H1299 cells and 10 µL of Suz12 antibody. ChIP DNA was used in qPCR with the control primer pairs or gene-specific primer pairs as indicated. Data are presented as Binding Events Detected per 1000 Cells using Epigenetic Services normalization scheme which accounts for primer efficiency and the amount of chromatin used in the ChIP reaction.