

Datasheet for ABIN6972905
anti-UTF1 antibody (N-Term)



[Go to Product page](#)

1 Image

Overview

Quantity:	100 µL
Target:	UTF1
Binding Specificity:	N-Term
Reactivity:	Human, Mouse
Host:	Rabbit
Clonality:	Polyclonal
Conjugate:	This UTF1 antibody is un-conjugated
Application:	Western Blotting (WB)

Product Details

Immunogen:	This UTF1 antibody was raised against a peptide within the N-terminal region of human UTF1.
Isotype:	IgG
Characteristics:	The UTF1 (undifferentiated embryonic cell transcription factor 1, hUTF1) gene encodes a protein that acts as a transcriptional coactivator of ATF2. The leucine-zipper domain is required for coactivation activity. UTF1 is also a key chromatin component in ES cells and is involved in chromatin structure and pluripotency. UTF1 antibody (pAb) was raised in a Rabbit host. It has been validated for use in Western blot, it has been shown to react with Human and Mouse samples.
Purification:	Affinity Purified

Target Details

Target:	UTF1
Alternative Name:	UTF1 (UTF1 Products)
Molecular Weight:	48 kDa
NCBI Accession:	NP_033508

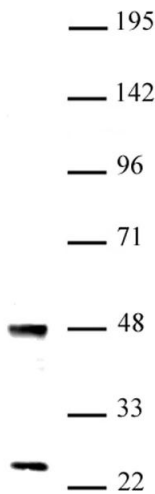
Application Details

Application Notes:	Optimal working dilution should be determined by the investigator.
Restrictions:	For Research Use only

Handling

Buffer:	Purified IgG in PBS with 30 % glycerol and 0.035 % sodium azide.
Preservative:	Sodium azide
Precaution of Use:	This product contains Sodium azide: a POISONOUS AND HAZARDOUS SUBSTANCE which should be handled by trained staff only.
Storage:	-20 °C
Storage Comment:	Avoid repeated freeze/thaw cycles by aliquoting items into single-use fractions for storage at -20°C for up to 2 years. Keep all reagents on ice when not in storage.

Images



Western Blotting

Image 1. UTF1 antibody (pAb) tested by Western blot Nuclear extract of mouse ES cells (20 µg) probed with UTF1 antibody (1:1,000).