

Datasheet for ABIN6972913
anti-XRCC1 antibody (N-Term)[Go to Product page](#)

2 Images

Overview

Quantity:	100 µL
Target:	XRCC1
Binding Specificity:	N-Term
Reactivity:	Human
Host:	Rabbit
Clonality:	Polyclonal
Conjugate:	This XRCC1 antibody is un-conjugated
Application:	Western Blotting (WB), Immunofluorescence (IF), Immunocytochemistry (ICC)

Product Details

Immunogen:	This antibody was raised against a recombinant protein corresponding to the N-terminal region of human XRCC1.
Isotype:	IgG
Characteristics:	XRCC1 (X-ray repair complementing defective repair in Chinese hamster cells 1) corrects defective DNA strand-break repair and sister chromatid exchange following treatment with ionizing radiation and alkylating agents. XRCC1 is involved in the efficient repair of DNA single-strand breaks formed by exposure to ionizing radiation and alkylating agents. This protein interacts with DNA ligase III, polymerase beta and poly (ADP-ribose) polymerase (PARP) to participate in the base excision repair (BER) pathway. XRCC1 antibody (pAb) was raised in a Rabbit host. It has been validated for use in Immunocytochemistry, Immunofluorescence and Western blot, it has been shown to react with Human samples.

Product Details

Purification: Affinity Purified

Target Details

Target: XRCC1

Alternative Name: XRCC1 ([XRCC1 Products](#))

Molecular Weight: 85 kDa

NCBI Accession: [NP_006288](#)

Pathways: [DNA Damage Repair](#)

Application Details

Application Notes: Optimal working dilution should be determined by the investigator.

Restrictions: For Research Use only

Handling

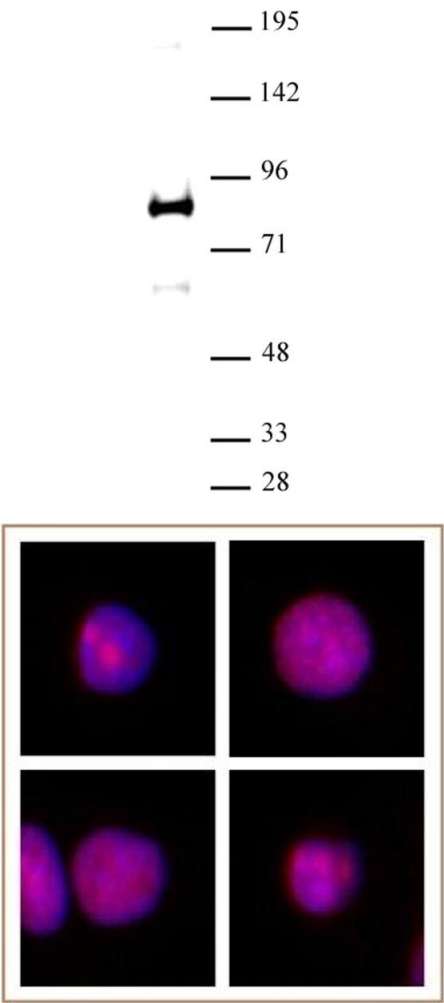
Buffer: Purified IgG in PBS with 30 % glycerol and 0.035 % sodium azide.

Preservative: Sodium azide

Precaution of Use: This product contains Sodium azide: a POISONOUS AND HAZARDOUS SUBSTANCE which should be handled by trained staff only.

Storage: -20 °C

Storage Comment: Avoid repeated freeze/thaw cycles by aliquoting items into single-use fractions for storage at -20°C for up to 2 years. Keep all reagents on ice when not in storage.



Western Blotting

Image 1. XRCC1 antibody (pAb) tested by Western blot. XRCC1 detection by Western blot. The analysis was performed using 30 µg HeLa nuclear cell extract and XRCC1 at a 1:500 dilution.

Immunofluorescence

Image 2. XRCC1 antibody (pAb) tested by Immunofluorescence. Formaldehyde fixed HeLa cells stained with XRCC1 antibody at a 1:2,000 dilution.