

Datasheet for ABIN6972987

**CD38 Protein (AA 43-300) (Fc Tag,FITC)**[Go to Product page](#)**3** Images

## Overview

Quantity:	200 µg
Target:	CD38
Protein Characteristics:	AA 43-300
Origin:	Human
Source:	HEK-293 Cells
Protein Type:	Recombinant
Biological Activity:	Active
Purification tag / Conjugate:	This CD38 protein is labelled with Fc Tag,FITC.

## Product Details

Characteristics:	FITC-Labeled Human CD38 Protein, Fc Tag
Purity:	>90 % as determined by SDS-PAGE.
Endotoxin Level:	Less than 1.0 EU per µg by the LAL method.

## Target Details

Target:	CD38
Abstract:	<a href="#">CD38 Products</a>
Background:	CD antigen CD38 is also known as ADP-ribosyl cyclase 1, which belongs to the ADP-ribosyl cyclase family. CD38 is expressed at high levels in pancreas, liver, kidney, brain, testis, ovary, placenta, malignant lymphoma and neuroblastoma. CD38 is a multifunctional ectoenzyme that catalyzes the synthesis and hydrolysis of cyclic ADP-ribose (cADPR) from NAD <sup>+</sup> to ADP-ribose.

## Target Details

These reaction products are essential for the regulation of intracellular  $\text{Ca}^{2+}$ . The loss of CD38 function is associated with impaired immune responses, metabolic disturbances, and behavioral modifications. The CD38 protein is a marker of cell activation. It has been connected to HIV infection, leukemias, myelomas, solid tumors, type II diabetes mellitus and bone metabolism. CD38 has been used as a prognostic marker in leukemia.

Molecular Weight: 56.3 kDa

## Application Details

Restrictions: For Research Use only

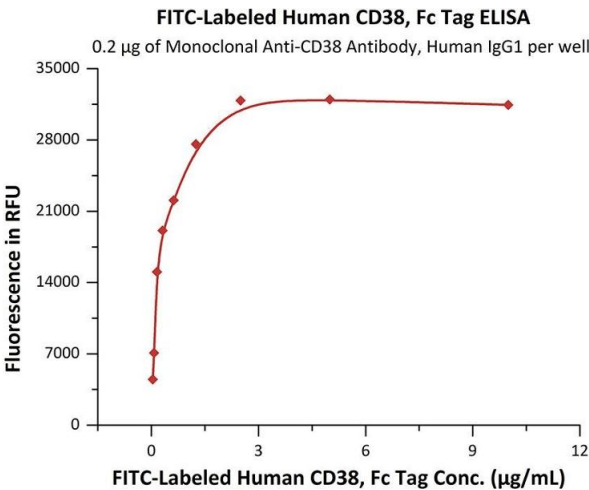
## Handling

Format: Lyophilized

Buffer: PBS, pH 7.4

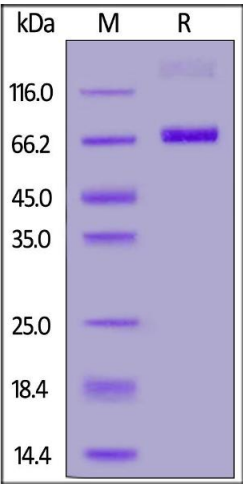
Storage: -20 °C

## Images



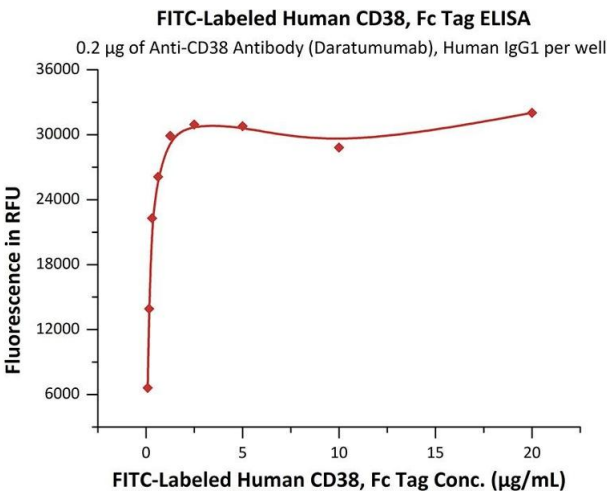
### ELISA

**Image 1.** Immobilized Monoclonal A Antibody, Human IgG1 at 2 µg/mL (100 µL/well) can bind Fed Human CD38, Fc Tag (ABIN6972987) with a linear range of 0.039-1.25 µg/mL (Routinely tested).



SDS-PAGE

**Image 2.** Fed Human CD38, Fc Tag on under reducing (R) condition. The gel was stained overnight with Coomassie Blue. The purity of the protein is greater than 90 % .



ELISA

**Image 3.** Immobilized A Antibody (Daratumumab), Human IgG1 at 2 µg/mL (100 µL/well) can bind Fed Human CD38, Fc Tag (ABIN6972987) with a linear range of 0.078-0.625 µg/mL (QC tested).