

Datasheet for ABIN6973017

CD7 Protein (CD7) (AA 26-180) (IFc Tag,FITC)[Go to Product page](#)**2** Images

Overview

Quantity:	200 µg
Target:	CD7
Protein Characteristics:	AA 26-180
Origin:	Human
Source:	HEK-293 Cells
Protein Type:	Recombinant
Biological Activity:	Active
Purification tag / Conjugate:	This CD7 protein is labelled with IFc Tag,FITC.

Product Details

Characteristics:	FITC-Labeled Human CD7 Protein, Llama IgG2b Fc Tag
Purity:	>90 % as determined by SDS-PAGE.
Endotoxin Level:	Less than 1.0 EU per µg by the LAL method.

Target Details

Target:	CD7
Alternative Name:	CD7 (CD7 Products)
Background:	T-cell antigen CD7 (CD7) is also known as GP40, LEU-9, TP41 and Tp40. CD7 is a protein that in humans is encoded by the CD7 gene, this gene encodes a transmembrane protein which is a member of the immunoglobulin superfamily. CD7 has been shown to interact with PIK3R1. This protein is found on thymocytes and mature T cells. It plays an essential role in T-cell

Target Details

interactions and also in T-cell/B-cell interaction during early lymphoid development.

Molecular Weight: 44.3 kDa

Pathways: [Cell-Cell Junction Organization](#)

Application Details

Restrictions: For Research Use only

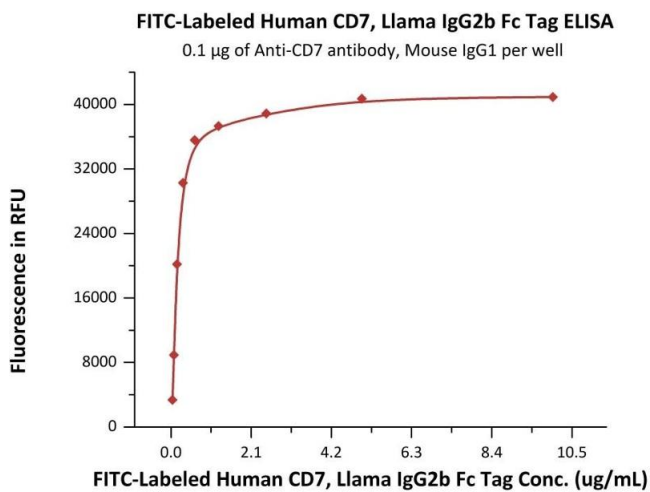
Handling

Format: Lyophilized

Buffer: PBS, pH 7.4

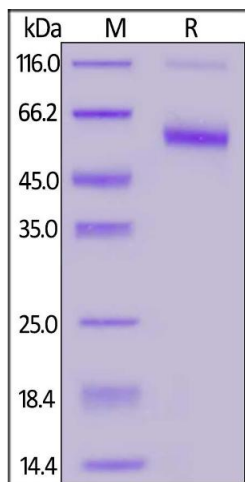
Storage: -20 °C

Images



ELISA

Image 1. Immobilized Anti-CD7 antibody, Mouse IgG1 at 1 µg/mL (100 µL/well) can bind Fed Human CD7, Llama IgG2b Fc Tag (ABIN6973017) with a linear range of 0.039-0.625 µg/mL (QC tested).



SDS-PAGE

Image 2. Fed Human CD7, Llama IgG2b Fc Tag on under reducing (R) condition. The gel was stained overnight with Coomassie Blue. The purity of the protein is greater than 90 %.