

Datasheet for ABIN6973033

CLEC12A Protein (AA 65-265) (His tag,FITC)



[Go to Product page](#)

1 Image

Overview

Quantity:	200 µg
Target:	CLEC12A
Protein Characteristics:	AA 65-265
Origin:	Human
Source:	HEK-293 Cells
Protein Type:	Recombinant
Purification tag / Conjugate:	This CLEC12A protein is labelled with His tag,FITC.

Product Details

Characteristics:	FITC-Labeled Human CLEC12A / MICL / CLL-1 Protein, His Tag
Purity:	>90 % as determined by SDS-PAGE.
Endotoxin Level:	Less than 1.0 EU per µg by the LAL method.

Target Details

Target:	CLEC12A
Alternative Name:	CLEC12A (CLEC12A Products)
Background:	<p>CLEC12A (C-type lectin domain family 12 member A) is also known as CLL1, DCAL2, MICL.</p> <p>Clec12a is an inhibitory receptor for uric acid crystals that regulates inflammation in response to cell death. Cell surface receptor that modulates signaling cascades and mediates tyrosine phosphorylation of target MAP kinases. Evidence of distinct disease propagating stem cells in myelodysplastic syndrome (MDS) has emerged in recent years. The role of CLEC12A in MDS,</p>

Target Details

	however, remains to be elucidated. Furthermore, CLEC12A has been proposed as a promising marker of leukaemic stem cells in AML.
Molecular Weight:	25.6 kDa
NCBI Accession:	NP_612210

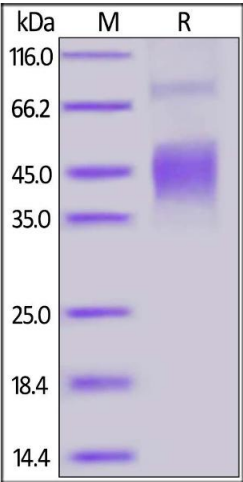
Application Details

Restrictions:	For Research Use only
---------------	-----------------------

Handling

Format:	Lyophilized
Buffer:	PBS, pH 7.4
Storage:	-20 °C

Images



SDS-PAGE

Image 1. Fed Human CLEC12A, His Tag on under reducing (R) condition. The gel was stained overnight with Coomassie Blue. The purity of the protein is greater than 90 % .