



[Go to Product page](#)

Datasheet for ABIN6973044

CD147 Protein (AA 22-205) (His tag,FITC)

2 Images

Overview

Quantity:	200 µg
Target:	CD147 (BSG)
Protein Characteristics:	AA 22-205
Origin:	Human
Source:	HEK-293 Cells
Protein Type:	Recombinant
Biological Activity:	Active
Purification tag / Conjugate:	This CD147 protein is labelled with His tag,FITC.

Product Details

Characteristics:	FITC-Labeled Human EMMPRIN / CD147 Protein, His Tag
Purity:	>90 % as determined by SDS-PAGE.
Endotoxin Level:	Less than 1.0 EU per µg by the LAL method.

Target Details

Target:	CD147 (BSG)
Alternative Name:	EMMPRIN (BSG Products)
Background:	CD147 is also known as Basigin (BSG), or extracellular matrix metalloproteinase inducer (EMMPRIN). The human basigin protein contains 269 amino acids that form two heavily glycosylated C2 type immunoglobulin-like domains at the N-terminal extracellular portion. A second form of basigin has also been characterized that contains one additional

Target Details

immunoglobulin-like domain in its extracellular portion. As members of the immunoglobulin superfamily play fundamental roles in intercellular recognition involved in various immunologic phenomena, differentiation, and development, basigin is thought also to play a role in intercellular recognition and regulate several distinct functions, such as spermatogenesis, expression of the monocarboxylate transporter and the responsiveness of lymphocytes. Basigin is a type I integral membrane receptor that has many ligands, including the cyclophilin (CyP) proteins Cyp-A and CyP-B and certain integrins.

Molecular Weight: 20.9 kDa

NCBI Accession: [NP_940991](#)

Pathways: [S100 Proteins](#)

Application Details

Restrictions: For Research Use only

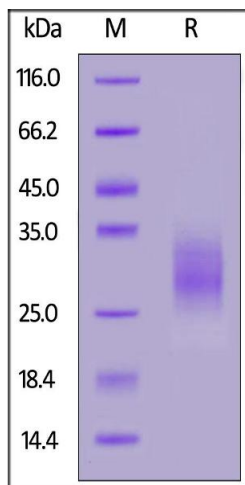
Handling

Format: Lyophilized

Buffer: PBS, pH 7.4

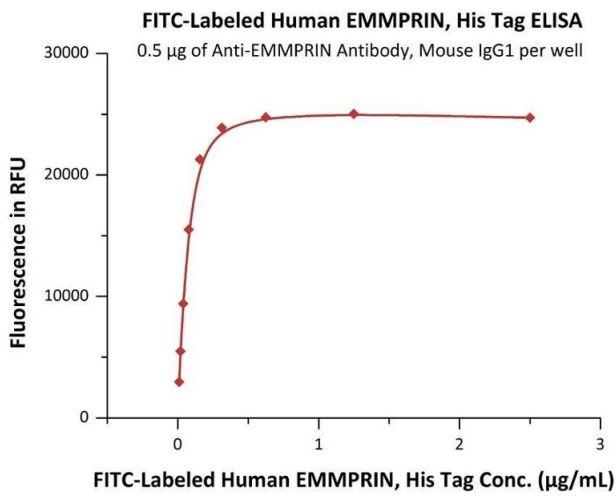
Storage: -20 °C

Images



SDS-PAGE

Image 1. Fed Human EMMPRIN, His Tag on under reducing (R) condition. The gel was stained overnight with Coomassie Blue. The purity of the protein is greater than 90 % .



ELISA

Image 2. Immobilized AIN Antibody, Mouse IgG1 at 5 µg/mL (100 µL/well) can bind Fed Human EMMPRIN, His Tag (ABIN6973044) with a linear range of 0.01-0.078 µg/mL (QC tested).