

Datasheet for ABIN6973195
PLGF Protein (AA 19-221) (Fc Tag)

3 Images

[Go to Product page](#)

Overview

Quantity:	500 µg
Target:	PLGF (PGF)
Protein Characteristics:	AA 19-221
Origin:	Human
Source:	HEK-293 Cells
Protein Type:	Recombinant
Biological Activity:	Active
Purification tag / Conjugate:	This PLGF protein is labelled with Fc Tag.

Product Details

Characteristics:	Human PLGF / PGF (19-221) Protein, Fc Tag (MALS verified)
Purity:	>95 % as determined by SDS-PAGE.
Endotoxin Level:	Less than 1.0 EU per µg by the LAL method.

Target Details

Target:	PLGF (PGF)
Alternative Name:	PLGF (PGF Products)
Background:	Placental growth factor (PGF) is also known as vascular endothelial growth factor-related protein, PLGF and PIGF2, is a member of the VEGF (vascular endothelial growth factor) sub-family - a key molecule in angiogenesis and vasculogenesis, in particular during embryogenesis. The main source of PGF during pregnancy is the placental trophoblast. PGF is

Target Details

also expressed in many other tissues, including the villous trophoblast. PGF is activated in angiogenesis and endothelial cell growth, stimulating their proliferation and migration. PlGF2 binds NRP1/neuropilin-1 and NRP2/neuropilin-2 in a heparin-dependent manner. Also promotes cell tumor growth.

Molecular Weight:	49.2 kDa
Pathways:	VEGFR1 Specific Signals

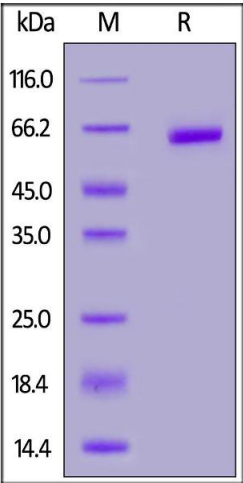
Application Details

Application Notes:	MALS verified
Restrictions:	For Research Use only

Handling

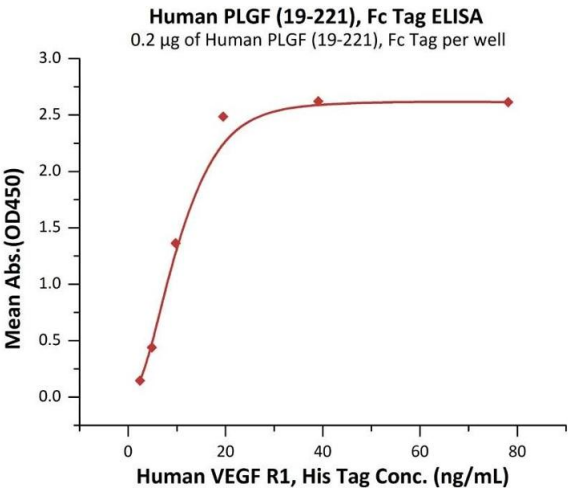
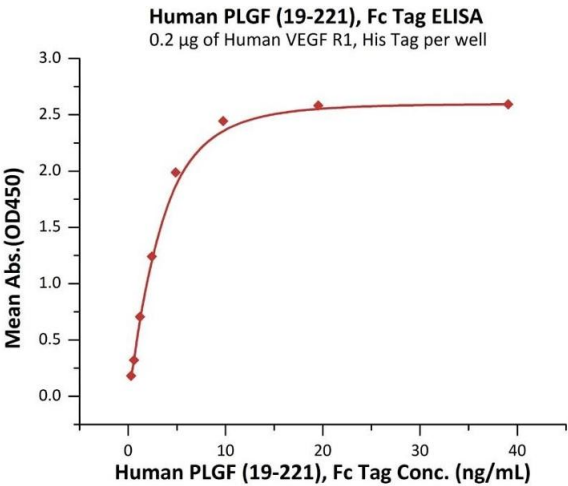
Format:	Lyophilized
Buffer:	PBS, pH 7.4
Storage:	-20 °C

Images



SDS-PAGE

Image 1. Human PLGF (19-221), Fc Tag on under reducing (R) condition. The gel was stained overnight with Coomassie Blue. The purity of the protein is greater than 95 % .



ELISA

Image 2. Immobilized Human VEGF R1, His Tag (ABIN2181915,ABIN2181916) at 2 µg/mL (100 µL/well) can bind Human PLGF (19-221), Fc Tag (ABIN6973195) with a linear range of 0.3-5 ng/mL (QC tested).

ELISA

Image 3. Immobilized Human PLGF (19-221), Fc Tag (ABIN6973195) at 2 µg/mL (100 µL/well) can bind Human VEGF R1, His Tag (ABIN2181915,ABIN2181916) with a linear range of 2-20 ng/mL (Routinely tested).