

Datasheet for ABIN6973196
PLGF Protein (AA 19-149) (His tag)



[Go to Product page](#)

2 Images

Overview

Quantity:	500 µg
Target:	PLGF (PGF)
Protein Characteristics:	AA 19-149
Origin:	Human
Source:	HEK-293 Cells
Protein Type:	Recombinant
Biological Activity:	Active
Purification tag / Conjugate:	This PLGF protein is labelled with His tag.

Product Details

Characteristics:	Human PLGF / PGF (19-149) Protein, His Tag (MALS verified)
Purity:	>90 % as determined by SDS-PAGE.
Endotoxin Level:	Less than 1.0 EU per µg by the LAL method.

Target Details

Target:	PLGF (PGF)
Alternative Name:	PLGF (PGF Products)
Background:	Placental growth factor (PGF) is also known as vascular endothelial growth factor-related protein, PLGF and PIGF2, is a member of the VEGF (vascular endothelial growth factor) sub-family - a key molecule in angiogenesis and vasculogenesis, in particular during embryogenesis. The main source of PGF during pregnancy is the placental trophoblast. PGF is

Target Details

also expressed in many other tissues, including the villous trophoblast. PGF is activated in angiogenesis and endothelial cell growth, stimulating their proliferation and migration. PLGF2 binds NRP1/neuropilin-1 and NRP2/neuropilin-2 in a heparin-dependent manner. Also promotes cell tumor growth.

Molecular Weight: 16.6 kDa

NCBI Accession: [NP_001193941](#)

Pathways: [VEGFR1 Specific Signals](#)

Application Details

Application Notes: MALS verified

Restrictions: For Research Use only

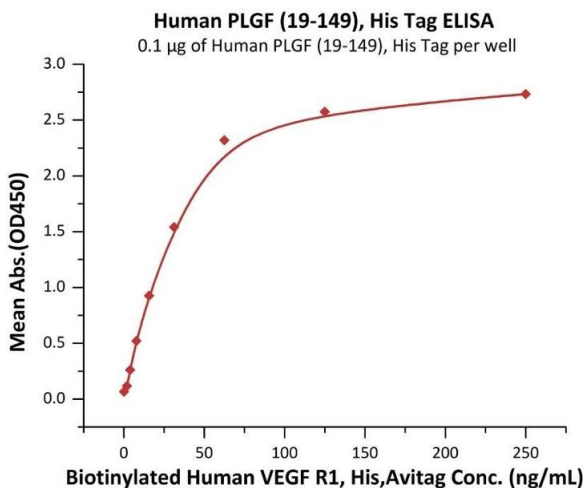
Handling

Format: Lyophilized

Buffer: PBS, pH 7.4

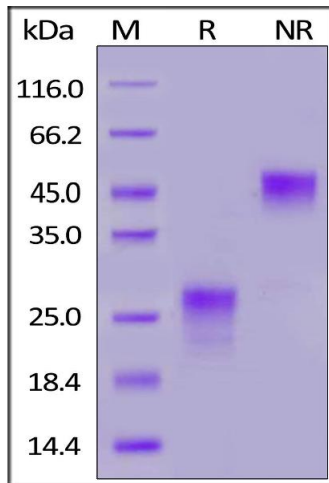
Storage: -20 °C

Images



ELISA

Image 1. Immobilized Human PLGF (19-149), His Tag (ABIN6973196) at 1 µg/mL (100 µL/well) can bind Biotinylated Human VEGF R1, His,Avitag (ABIN5955009,ABIN6253629) with a linear range of 1-31 ng/mL (QC tested).



SDS-PAGE

Image 2. Human PLGF (19-149), His Tag on under reducing (R) and ing (NR) conditions. The gel was stained overnight with Coomassie Blue. The purity of the protein is greater than 90 % .