

Datasheet for ABIN6973205

PSMA Protein (AA 44-750) (His tag,FITC)



[Go to Product page](#)

2 Images

Overview

| | |
|-------------------------------|--|
| Quantity: | 200 µg |
| Target: | PSMA (FOLH1) |
| Protein Characteristics: | AA 44-750 |
| Origin: | Human |
| Source: | HEK-293 Cells |
| Protein Type: | Recombinant |
| Biological Activity: | Active |
| Purification tag / Conjugate: | This PSMA protein is labelled with His tag,FITC. |

Product Details

| | |
|------------------|--|
| Characteristics: | FITC-Labeled Human PSMA / FOLH1 Protein, His Tag |
| Purity: | >95 % as determined by SDS-PAGE. |
| Endotoxin Level: | Less than 1.0 EU per µg by the LAL method. |

Target Details

| | |
|-------------------|--|
| Target: | PSMA (FOLH1) |
| Alternative Name: | PSMA (FOLH1 Products) |
| Background: | Prostate-specific membrane antigen (PSMA) is also known as Folate hydrolase 1 (FOLH1), Glutamate carboxypeptidase 2 (GCP2), N-acetylated-alpha-linked acidic dipeptidase I (NAALAD1), which belongs to the peptidase M28 family and M28B subfamily. FOLH1 / PSMA is stable at pH greater than 6.5. FOLH1 / PSMA is a type II transmembrane zinc metallopeptidase |

Target Details

that is most highly expressed in the nervous system, prostate, kidney, and small intestine. FOLH1 / GCP-2 is homodimer and binds 2 zinc ions per subunit, and required for NAALADase activity. The catalytic activity of PSMA involved in releasing of an unsubstituted, C-terminal glutamyl residue, typically from Ac-Asp-Glu or folylpoly - gamma - glutamates. FOLH1 / GCP-2 / PSMA has both folate hydrolase and N - acetylated - alpha - linked - acidic dipeptidase (NAALADase) activity and has a preference for tri-alpha-glutamate peptides. GCP-2 / PSMA involved in prostate tumor progression and also exhibits a dipeptidyl-peptidase IV type activity. In vitro, cleaves Gly-Pro-AMC.

Molecular Weight: 81.4 KDa

NCBI Accession: [NP_004467](#)

Application Details

Restrictions: For Research Use only

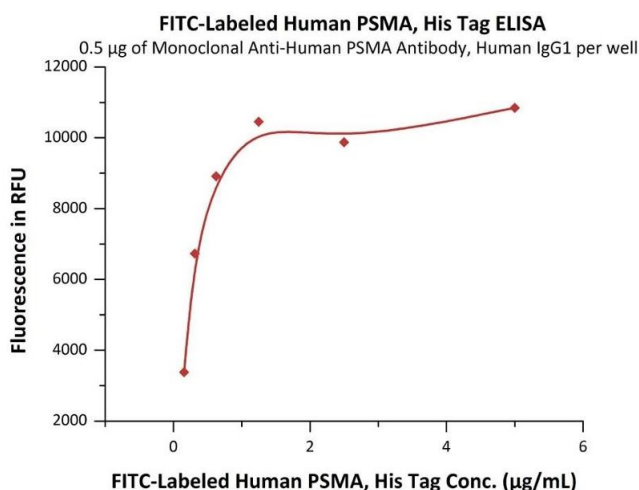
Handling

Format: Lyophilized

Buffer: PBS, pH 7.4

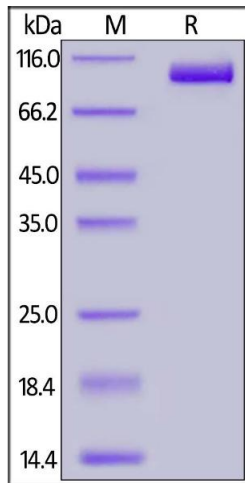
Storage: -20 °C

Images



ELISA

Image 1. Immobilized Monoclonal A PSMA Antibody, Human IgG1 at 5 µg/mL (100 µL/well) can bind Fed Human PSMA, His Tag (ABIN6973205) with a linear range of 0.156-1.25 µg/mL (QC tested).



SDS-PAGE

Image 2. Fed Human PSMA, His Tag on under reducing (R) condition. The gel was stained overnight with Coomassie Blue. The purity of the protein is greater than 95 % .